

# Application for KAAB Accreditation

SAMPLE

**Program Information:**

OO University Architecture Program

**Representative :**

Name

(Sign)



한국건축학교육인증원

Korea Architectural Accrediting Board

## Contents

<u>Section</u>	<u>Page</u>
I . Program Description – History & Overview	00
II . Responses to the Previous Review	00
III . Administrative Structure & Governance	00
IV . Faculty	00
V . Student	00
VI . Curriculum	00
VII . Courses and Class Size	00
VIII . Studio Courses	00
IX . Physical Resources	00
X . Publications and Periodicals	00
XI . Major–Related Publication and Periodical Resources	00
Supp. Faculty Curriculum Vitae	00
Materials Course Descriptions	00
Accredited Course Check List for Students	00
Departmental Rules & Regulations for Accreditation	00

---

## I. Program Description – History & Overview

### 1.1 History

#### 1.1.1 Summary

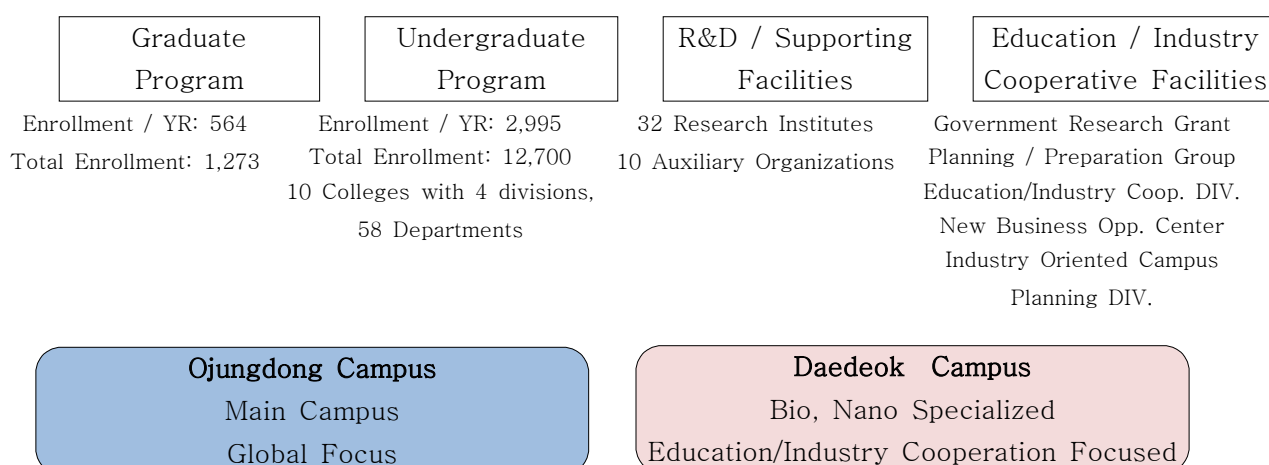
OO University was founded in March, 1956 by Mr. William A. Linton of the Southern Presbyterian Branch of The Church of Jesus in America as a four-year Christian School. In April 1959, the school was promoted to a college where Mr. William A. Linton served as a first president.

The University was focused on educating small number of elites until it was combined with OO University in Seoul in September of 1970. In 1972, the University was chosen as one of the pilot institutions in Korea, and by the end of the decade, the number of students have increased by seven fold to 4,017 students.

However, in October 1982 Chungcheong Precinct where the school originated from demanded an independent college, and as a result, the original campus and the Seoul campus has been separated. Accordingly, in November of 1982 the University has established a managing entity and has been renamed to OO University.

Since then, the University, with its founding principles of "Truth, Freedom, and Service," has grown as a major institution with seven graduate schools (total enrollment 1,273), and ten undergraduate schools with 10 Colleges with 4 Divisions, and 58 Departments (total enrollment 12,700) along with 10 auxiliary organizations and 32 research institutes.

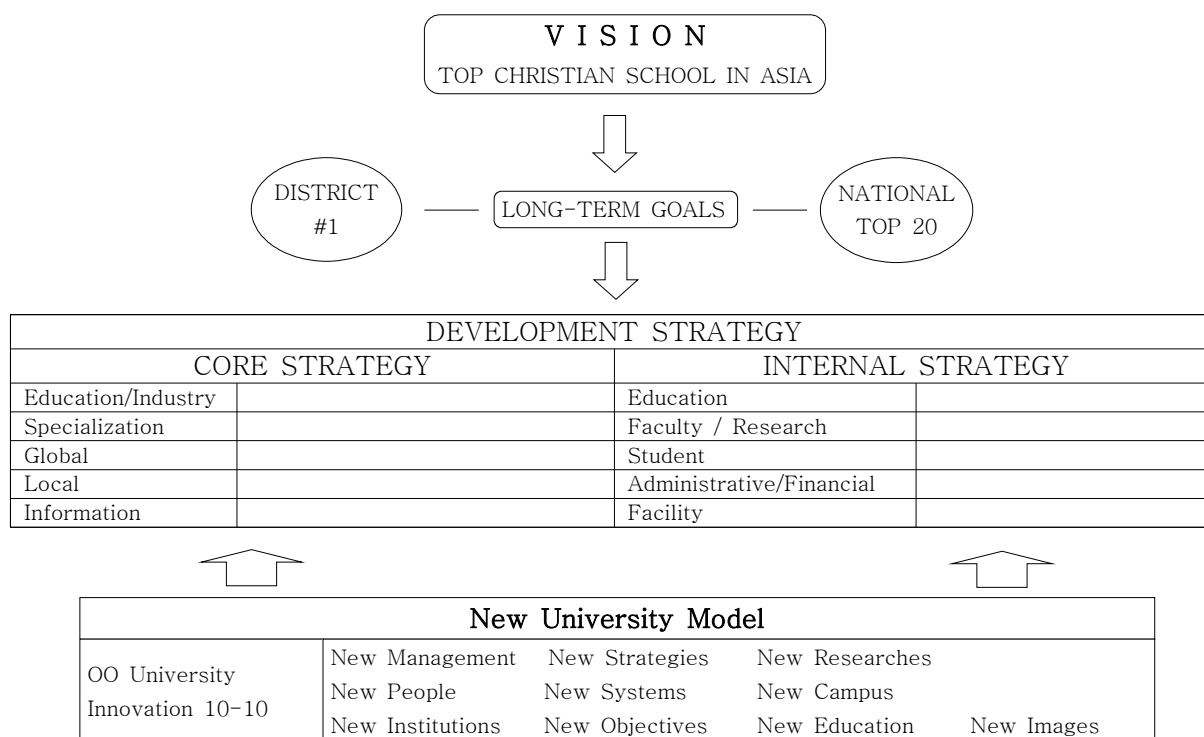
In March of 2006, the University has expanded its campus to Daedeok Research Complex in Daedeok Valley. In October 2008, the campus took ownership of the adjacent foreign school and operating programs such as Linton College, South Korea Language Institute, and Foreign Language Institute.



Ref. 1.1 OO University Overview (2013 2<sup>nd</sup> Semester)

### 1.1.2 University Precepts & Objectives

- Precepts : Truth, Freedom, and Service
  
- Objectives : The primary goal of OO University is to educate competent leaders who will serve their nation and their church based on Christian principles. Students are required to follow a very strict curriculum in order to gain new knowledge and skills so that they will make faithful leaders equipped with intellect and virtue in compliance with the guidelines of the Ministry of Education.  
OO aims to contribute to the church and the nation by producing well-rounded intellectuals with high moral values. The University offers a wide range of opportunities to acquire insight and knowledge through the Christian spirit of truth, freedom and service.
  
- Development Strategy : Based on University Precepts the University is setting innovative overall and departmental strategies for growth and development of the University.



Ref 1.2 OO University Vision & Development Strategy

### 1.1.3 Brief History

#### ■ OO Christian School (1954-1958)

- 1954.05 The Korea Mission, World Missionary Work Division of the Presbyterian Church, USA decided to establish a university in Daejeon.
- 1956.04 Daejeon Christian Academy was established with three departments. Dr. William A. Linton became the first president.



#### ■ OO Univeristy (1959-1970)

- 1959.04 The institution was renamed as OO College.
- 1960.07 Dr. John Talmage took office as the second president.
- 1963.01 100 percent of the students passed the bachelor's degree examination required by the Ministry of Education.



Ref 1.3 - Establishment of the University

#### ■ OO University (1971-1982)

- 1971.01 The name of the institution was changed to OO College.
- 1972.01 Granted by the Ministry of Education to establish a graduate school.
- 1979.12 The Graduate School of Regional Science is established.
- 1982.12 The name of the institution was changed to OO College.

#### ■ OO University (1983-1986) Two Campus (Daejeon and Seoul)

- 1986.03 Dr. Won Sul Lee was inaugurated as the 9th president.
- 1985.11 OO College was granted a university status by the Ministry of Education
- 1982.12 The name of the institution was changed to OO College.

#### ■ OO University (1986-2005)

- 1989.11 The Graduate School of Small & Medium Business was established.
- 1988.11 The Graduate School of Education was established.
- 1992.03 Dr. Chong Min Pak was inaugurated as OO's 10th president.

- 1995.10 The Graduate School of Industry was established.
- 1996.03 Dr. Seyeul Kim was inaugurated as OO's 11th president.
- 1996.10 OO was heralded as an outstanding university in the 1996 evaluation for educational reform conducted by the Korean Council for University Education.
- 1997.02 OO was recognized as an outstanding institution in the general evaluation conducted by the Korean Council for University Education.
- 1997.10 Multimedia College was established.
- 1997.11 The Graduate School of Technological Interdisciplinary Studies and the Graduate School of Public Policies was established.
- 1999.09 Selected as a recipient of BK21 funding by the Ministry of Education.
- 2002.02 Dr. Yoon-Pyo Shin was inaugurated as the 12th President.
- 2002.02 General Education Program was accredited by Korean Council for University Education.
- 2003.04 Implemented a master's degree in IT programs for professors of the Philippines
- 2003.06 Selected as Regional Research Center (RRC) by the Ministry of Science and Technology
- 2004.02 Established the Institute for Industry-Academia Cooperation.
- 2004.03 Dr. Sangyoon Lee was inaugurated as the 13th President.
- 2005.01 Rev. Sam-hwan Kim was inaugurated as the 7th Chairman of the Board of Trustees.
- 2005.02 Established Daedeok Valley Campus
- 2005.03 Established the Promega-Hannam BPCI (Bio-Pharmaceutical Technology Center Institute)
- 2005.03 Established the College of Art and Design.
- 2005.03 Established the Linton Global College.

■ OO University (2006-Current)

- 2006.04 Celebrated the 50th Anniversary.
- 2006.04 Opened the Linton Memorial Park
- 2007.04 Opened the HNU Science Park in Daedeok Valley Campus
- 2007.12 Granted the land of Daejeon Christian International School by the Presbyterian Church (USA)
- 2008.02 Opened the Global House (45 units) and Student Dormitory (Capacity: 540)
- 2008.03 Dr. Hyung-tae Kim was inaugurated as OO's 14th President.
- 2008.12 Dr. Jeong-yeol Kim was inaugurated as the 8th Chairman of the Board of Trustees.
- 2009.02 Selected as a recipient university of the governmental funding for

- employment support by the Ministry of Education.
- 2009.12 Established the HNU-US branch office at Western Carolina University, NC, U.S.A.
- 2010.08 Started construction of a cutting-edge lecture hall and a new extension of building for the College of Economics and Business Administration
- 2011.03 10 Colleges, 7 graduate schools; 17,000 registered students; 73,900 graduates
- 2011.04 Unveiling of statue of Dr. William A. Linton, OO University's first president
- 2011.08 Signing ceremony for HNU-Hahiho Hotel industry-academia agreement
- 2011.09 Dedication ceremony for OO Road and stadium ball field
- 2011.10 Twentieth anniversary of exchange with Okinawa International University
- 2011.10 Signing ceremony for HNU-SK Broadband mobile campus project
- 2012.03 Inauguration of Dr. Hyungtae Kim as 15th president
- 2012.06 Dedication ceremony for high-tech lecture hall and Business College expansion
- 2012.09 Dedication ceremony for student military education team
- 2012.10 Inaugural art gallery exhibition, College of Art
- 2012.11 OO Day 56th anniversary event
- 2013.02 Rev. Samsoo Jang elected chairman of Daejeon Christian Academy
- 2013.03 Groundbreaking ceremony, Christian Missionary Center

## 1.2 History and Objectives of Architecture Program

### 1.2.1 History of Architecture Program

OO University Architecture program started in June of 1983, and the first group of students were admitted in 1984. Education system in the beginning of the program was similar to a four-year architectural engineering curriculum. After dividing the program into a 5-yr Architecture program and a 4-yr Architectural Engineering program in 2003, the architecture program is sustaining 5-yr curriculum. Between 2003 and 2010, students were admitted to both Architecture and Architectural Engineering program at the time of the entry and were given a choice to decide on their major when they advanced to the 2<sup>nd</sup> yr. In 2011, the students had to choose major at the 2<sup>nd</sup> semester of the 1<sup>st</sup> yr, and since 2012, the student had to select their major at the time of entry. This change to decide on the major earlier than later is made to better educate our students to meet the needs for architectural accreditation needs.

#### ■ Initial Curriculum (1984–2002)

This is the period when the architecture education system is similar to a four-year architectural engineering program. Like most of Korean universities at the time, both architecture and architectural engineering students received similar education. Carrying a similar program and integrating structural and design education concurrently were asked from this period.

#### ■ 5-yr Architecture Program Initiation (2003–2007)

5-year Architecture Program started to emerge in Korea and our program also have changed to a 5-yr program in 2003. During this period, mandatory courses have been designated and necessary courses for the accreditation were assigned from the advisors to meet the performance assessment criteria. During this time, 5-yr Architecture Program's objectives and direction have been explored and through researches funded by the university, architecture program curriculum were developed.

#### ■ 5-yr Architecture Program (2008 – Current)

Since 2008, architecture program has changed to increased the number of mandatory classes and strengthened the curriculum to better meet the requirement for the accreditation. (In 2008 number of mandatory course credits increased to 97). Internal policies were also updated to reflect these changes by specifying the rules & regulations (January 2014) and departmental regulations (March 2014).

The admission procedure also has changed for the students to choose major at the 2<sup>nd</sup> semester of the 1<sup>st</sup> yr in 2011, and since 2012 the student need select their major at the time of entry.

The space allocated for architecture education and faculty's research needs have increased due to the relocation of the program from engineering to science division, and there are plans for qualitative improvements for the educational environment through updating HVAC system and remodeling in 2014 .



## [History of Architecture Program]

Date	List of Events	Notes
1983. 9	Architectural Engineering Department Founded	Enrollment 40
1984. 3	Student Admitted	
1987.10	Increased number of Enrollment	40 → 60
1989.11		
1991. 3		
1992. 7		
1993. 8	<p>Continue with the LIST of HISTORICAL FACTS</p> <p>Sample does not list all facts due to brevity</p>	
1995. 9		
1995.10		
1998.10		
1999. 3		
2000. 9		
2002. 1		
2002. 6		
2003. 3		
2004.12		
2005. 2		
2006. 1		
2006. 3		
2007. 6		
2008. 2		
2008. 3		
2010. 9		
2011. 2		
2011. 2		
2011. 6		
2011 9		
2011.11		
2012. 9		
2012. 2		
2012. 3		
2013. 2		
2013. 3		
2013. 3		
2014. 1		
2014. 2		

## **1.2.2 Architecture Program : Objectives**

### **A. Prepared Future Architects**

#### **1) Architects with Practical Knowledge**

The program is oriented to educate students with practical knowledge that respects the urban context, understands matters such as public implication of design, economic conditions, and the needs of the client.

#### **2) Architects to Serve the Local Community**

Given the fact that the university is located at Daejeon, emphasis on understanding the region is one of the most important objectives in our design education. It is important to have the ability and attitude to work with the local context to understand the history of the site and develop building designs that react to the specific needs of the community.

### **B. Architecture Program to Promote Comprehensive Thinking**

OO University's Architecture Program aims to train architects who can think comprehensively. Comprehensive thinking is based on the understanding of the relationship between the various factors affecting the building design. When practicing architecture, it is frequently required to understand and interact with number of different areas of expertise. This is a very important skill to have as an architect and therefore educating our students to think comprehensively is one of our objectives in our program.

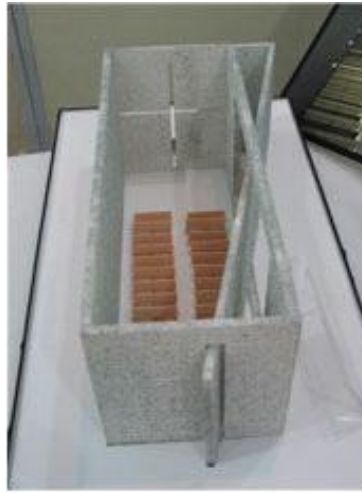
### **C. Integrated Education System**

OO University's Architecture Program's next objective is to provide an integrated educational program. The curriculum has these three underlying integrated education ideas: "Analysis and Creation", "Technology and Design", and "Understanding Various Scales."

#### **1) Integrated Education 1: Analysis and Creation**

The courses focus on integration of analysis and creation as a learning tool for integrative thinking process. Design process is complex and many factors are superimposed onto the building. By the method of analysis, the building and its integrated ideas are understood. Each of these factors that affect the design are related and it is important to understand the integrated nature of projects.

As an important resources for the design studio, the 100 case studies of notable architectural masterpieces are analyzed and become basis for a creative design project to follow.



Ref 1.4 Analysis of Architectural Works

Ref 1.5 Analysis of Architectural Works through Modeling

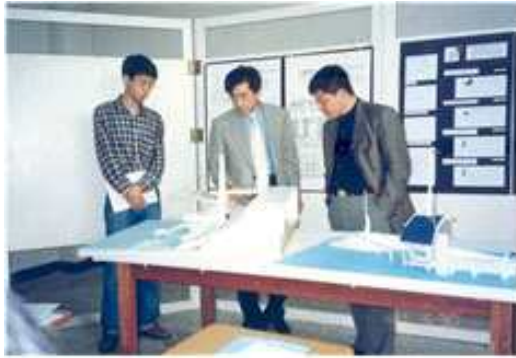


Ref 1.6 Analysis of Architectural Works

Ref 1.7 Nine Square and 3D Composition

## 2) Integrated Education 2: Design and Technology

Another important elements of the integrated design is to understand the relationship between design and technology. Even before the introduction of 5-yr architecture program, OO University's Architecture Program offered design courses that were taught jointly by both architecture design and architectural engineering faculties. Our program aims to promote the understanding of how technology integrates into building project, and we believe our students will have better capability of using technology as an integral part of design.



Ref 1.8 Technology & Design Integrated Studio(1994)

Ref 1.9 Technology Studio (2004)



Ref 1.10 Building Systems (2012)

Ref 1.11 Remodeling Project (2013)

### 3) Integrated Education 3: Understanding Various Scales

This is to understand various scales in architecture that ranges from a scale of the city all the way down to architectural detail level. Architectural Design 8 (Urban Design Studio), Construction 9 Design (Graduation Design), and Architectural Design 10 (details of the graduation design) courses are taught collaterally to help students to understand these various scales that exist in architecture. The process begins with the 4<sup>th</sup> yr Urban Design Studio and continues to the 5<sup>th</sup> yr studio where they select individual parcels to explore different scales: city, building, and building detail.

Through the understanding of various scales, students will develop an ability to work in multiple scales in design and in practice.



Ref 1.12 Block Scale & Individual Projects (Architecture Design IX, 2013)

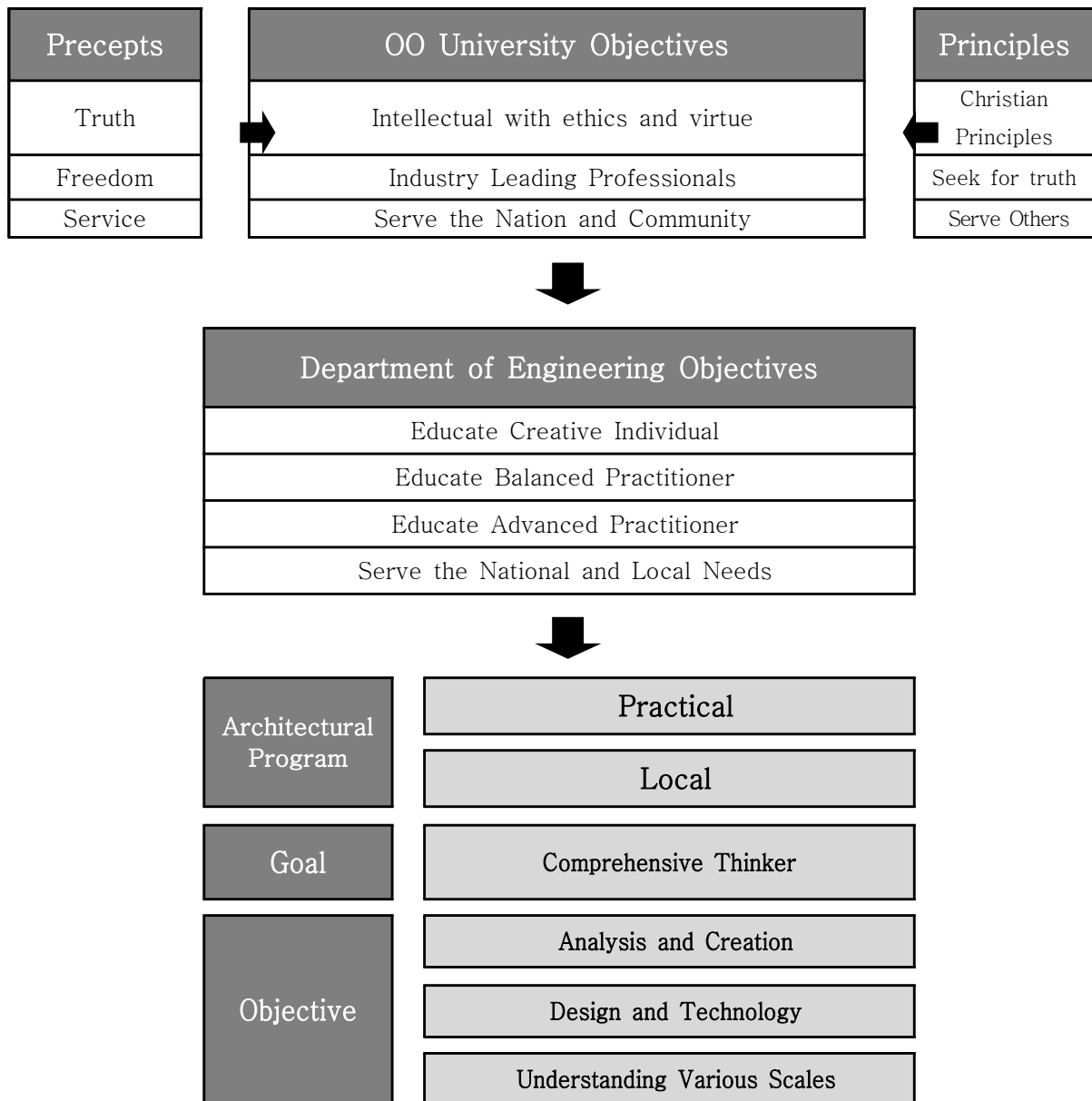


Ref 1.13 Block Scale & Individual Projects (Architecture Design X, 2010)



Ref 1.14 Urban Design

The Architecture Program at OO University starts with an analysis projects in the lower grades, and follows up with the classes that focus on understanding of form, and building systems along with architecture history courses such as Western architecture 1 & 2, Modern Architecture, Korean Architecture in the intermediate grades. The program focuses on integrated design process and understanding of various scales towards the end of the program.



[OO University Architecture Program Objectives Summary]



## 1.2.3 Program Description

### A. Program Strength

#### 1) Inter-related curriculum between studio and lecture classes

The program aims to strengthening the link between lecture and studio courses with the intention of systematically interrelating related. In particular, 4th and 5th year courses such as Urban Design, Urban Design Project, Graduate Project (design by selecting one of the buildings of the results from the Urban Design Project), and Drawing Documentation are interrelated to give broad understanding of urban design, architecture design, and details.

- **Enrichment through the strengthening of linkages between courses** (see table 6.8)

Example) Presentation Skills - Architectural Design Studio IV

Architectural Programming - Architectural Design Studio VI

Computer Graphics 1 - Architectural Design Studio III

#### 2) Various Design Studios and Teaching Methods

Providing various learning opportunity to approach design to promote the right design ability. In the beginning of the program there are emphasis in understanding of the configuration system and configure the system through the construction of a building project, starting from analysis program (in-out approach), and to undertake the project (out-in approach) approaching from the site. During intermediate years these approaches are combined (in-out-in approach) as well as an attempt to understand systems and reuse existing space in the renovation projects. Advanced courses teach the relationship between individual buildings and the urban context. Students with experience in a variety of studios throughout the whole curriculum will explore various design approaches.

#### 3) Promote Active Integration of Curricular and Extra-Curricular Activity

A variety of educational contents including core curriculum and extra-curricular activities are provided to maximize the learning opportunity for the students. This program, with the support of the students' voluntary activities and departments, the participation of graduating seniors and local experts carried out through a variety of methods. Activities provided by the department includes domestic and foreign trips, various professional lectures, campus design competitions, international competitions (government-sponsored volunteer programs, career opportunity to prepare their graduates. There also are student clubs such as volunteer club (Green Narae), Habitat, and cross-year clubs.

▪ Link between courses in the core curriculum and extra-curricular activities

- Theory of Asian Architecture - Trips abroad in Asia (For 4th Year)
- History of Korean Architecture - Korean traditional architecture exploration / historical architecture student club
- Green Building Competition
- Architectural Photography - Department of Architecture Competition



Time & Space



Gongganuri



Historical Architecture



Saeumte



Green Narae (Domestic)



Green Narae (International)



Architectural Photography



Habitat

## B. Growth Plans

OO University of Architecture and has been making improvements to the education system and educational environment since 2003 when the five-year program have been implemented. As a result our department was named a Best Department in 2010 in inter-departmental rating. The basic directions of our development plans aims to respond to changes in architectural practice environment by focusing on 'globalization' and supporting graduates from our program.

### 1) Globalization

Globalization strategy is perceived as learning architectural trends and characteristics of foreign countries and to be better prepared for an opportunity internationally. Although the current efforts on globalization exists, the program intends to promote globalization continuously. Currently, we have one foreign professor who teaches architectural practice and conducting field trips. However, several challenges still to be met with regard to globalization and the school is prepare to put in more effort in promoting it.



- **Major Challenges for Globalization**

- Foreign Professor is nearing his or her retirement, New foreign faculty need to be selected.
- Department has no exchange agreement. MOU's need to be started to start exchange programs with foreign universities.
- International Student Competition and various international activities, including expanding international students a variety of student competitions that target is being conducted but still exhibited slight earnings situation and actively encourage them to create an atmosphere and results obtained need to join efforts

## **2) Supports for Graduates**

Architectural education should strive to build a network where students can communicate with the department after the graduation for professional growth and opportunity.

When these systems are set, graduates of this program can benefit greatly long-term. Our plans are as follows.

- **For Graduating Class**

- Seminar on Recent Trends Architecture
- Free Training Courses
- Place for graduates to exchange information

### **1.2.4 Accreditation Preparation and Educational Resources**

#### **A. Changes in the Curriculum**

##### **1) 5-yr Accredited Architecture Program**

- In 2003, five-year architecture program started (165 credit hours to graduate, In 2011 adjusted to 160 credits)
- As of February 2014, 168 students graduated
- Architecture Enrollment Quota of 35 Students

##### **2) Researches and Revised Curriculum to Prepare for the Accreditation**

5-year Architecture Program started in 2003. During this period, mandatory courses have been designated and necessary courses for the accreditation were assigned from the advisors to meet the performance assessment criteria. During this time, 5-yr Architecture Program's objectives and direction have been explored and through researches funded by the university, architecture program curriculum were developed. Since 2008, architecture program has changed to increased the number of mandatory

classes and strengthened the curriculum to better meet the requirement for the accreditation. (In 2008 number of mandatory course credits increased to 97). Internal policies were also updated to reflect these changes by specifying the rules & regulations (January 2014) and departmental regulations (March 2014).

- Research on Architectural Accreditation (2005.2)
- Research on Architectural Accreditation (2006.1)
- Designate 97 required credits
- Designate 108 credits to graduate

### 3) Departmental Regulation Updates

#### ▪ Architecture Programs Rules & Regulations Update (2014.1)

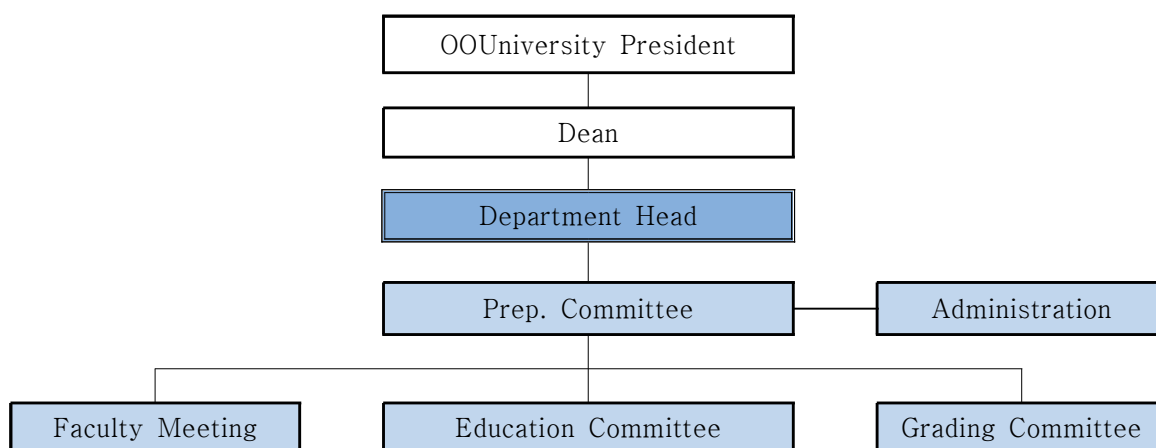
- Student records, curriculum, graduation requirements, regulatory standards for transfer students
- Establishing standards for maintenance of architectural education program , certification compulsory subjects, an the provisions.

#### ▪ Architecture Program Internal Policy Update (2014.3)

- For curriculum improvement Architecture Education Promotion Organization was created.
- Committee for practical education established.

### 4) Committee to Prepare for Accreditation

- Continuous improvement of education curriculum and system, Architecture Education Accreditation Committee, to promote and maintain accreditation standards
- Preparation committee, education committee, faculty meetings, grading committee to prepare for accreditation



## B. Establish a System to Record Student Progress and to Rate Courses

### 1) Faculty meetings to confirm the contents of the courses, and establishing self-assessment system.

- Professors and Lecturers get together for faculty meeting to evaluate and improve courses twice every semester.

Date	Meeting	Notes
2009. 02. 26	2009-1st Semester Accreditation Workshop #1	Course Description Check
2009. 06. 18	2009-1st Semester Accreditation Workshop #2	Design Studio Submittal Check
2009. 08. 27	2009-2nd Semester Accreditation Workshop #1	Course Description Check
2009. 12. 06	Continue with the Appropriate Information  Sample does not list all facts due to brevity	
2010. 03. 04		
2010. 06. 24		
2010. 08. 19		
2010. 11. 23		
2010. 12. 20-22		
2011. 02. 24		
2011. 06. 20		
2011. 09. 15		
2012. 03. 06		
2012. 06. 20		
2012. 12. 17		
2013. 03. 07		
2013. 06. 27		
2013. 08. 29		
2014.01. 08-09		

### 2) Program Orientation

- **Orientation to prepare and understand architecture as a career**
  - Targeting the 3rd year students for career related seminars
  - 2-day career guidance seminars
  - Inviting graduates from different field for Q&A session
- **Major Introduction Seminars**
  - For 1st year students.
  - Career counseling and introduction to the major with faculty members.
    - : An overview of the major
    - : Accreditation and student performance criteria explained

Date	Applicable Year	Contents
2009. 02	1st Year	Introduction to architecture program
2009. 03	All	Student & faculty meeting
2009. 04	2nd Year	2nd Year OMT (2day workshop)
2009. 11	<div> <div>Continue with the Appropriate Information</div> <div>Sample does not list all facts due to brevity</div> </div>	
2010. 02		
2010. 04		
2010. 04		
2010. 11		
2011. 02		
2011. 03		
2011. 04		
2011. 05		
2012. 04		
2013. 03		
2013. 05		
2014. 03		

### 3) Student Portfolio

- All Students are required to prepare a portfolio that documents design outcome as well as the process.
- Documentation will be digitized in a CD.

### 4) Lecture Rating and Survey

#### ■ Lecture Rating

- All faculty will be rated for their lecture by the students.
- These result will be applied towards personal and departmental rating.
- Based on the rating, school makes recommendation to modify the course.

#### ■ Survey

- Student survey is taken in regular intervals to apply student feedback.
- Alumni also participates in giving feedback to modify current school system.

### C. Faculties from both Academia and Practice

#### 1) Collaborative Education with Practical Experts

- Department forms collaboration with professional experts
  - Experts from all fields are selected and honored.
- List of Professional Practitioners

Date	Field	Company	Name	Title
2013. 05. 20	Design	Shinwha Engineering		Principal
2013. 05. 27		Ipop Architects		Principal
2013. 06. 04		D&B Architects		Principal
		Continue with the Appropriate Information  Sample does not list all facts due to brevity		
	Structural			
	MEP			

#### ■ Collaboration Types

- A) Lecture from professional consultants
- B) Critic and review from professional consultants

#### 2) Team Teaching between Academic Faculty and Professional Practitioner

- Team teaching studio run by full-time professor and professional practitioner system
  - Co-work system
    - Regular lecture session per grade to standardize the curriculum
  - Cross critic system
    - Critic system composed of full time faculty and practitioner

#### 3) Internship

- Required internship for students
- over 160 hours of internship per student

## D. Support for Faculties

### 1) Full-time faculty coordinator for each year / Mentor system

- There are seven full-time faculties including one foreign faculty and all grades, 1 through 5, are coordinated by full-time faculties.
- All students are assigned a faculty mentor throughout their stay at the school.

### 2) Accreditation Support

- There are two designated support to assist faculty with accreditation preparation.

### 3) Financial Support

- Designated fund for accreditation
- 35,000,000 won fund secured for year 2013, 10,000,000 additional fund collected from corporate donors.

## 1.2.5 Student Activities

### A. Student Clubs

There are number of student activity clubs in the department. They participate in year-end exhibitions and are managed by full-time faculties.

Time & Space

Gongganuri

Historical Architecture

Saeumte

#### ■ Gongganuri

Gongganuri has been created in 1990 by students who are interested in computer graphics and design theory and has been active for 21 years. There are opportunity to learn programs such as AutoCad, Max, Revit, and Rhino.

#### ■ Time & Space

Time & Space club started in 1985 as a small group within the department of Architecture. All students participate in architectural design and theory work learning analyzes and promotes a deep insight and understanding of the building. Learning activities, as well as promote the unity and fellowship among members through it, and the effect of strengthening the ties between all grades are opportunities we create.

#### ■ Saeumte

Seumteo has been created in 1986, it has a history of 25 years. Promote learning activities through a deep understanding of and discussion about the majors, and the club is trying to members of the mutual development. Mainly focused on the study of design theory and design work, have two seminars a week during term time, by selecting the topics and learning in such a way that each discussion comments. The General

Assembly is conducted twice a year by attending to all the graduates have the opportunity for exchange between Seonhubae.

- Learning Activities: Seumteo personnel conducted a seminar on their own vacation time each year (twice a year)

(Architect and building analysis and design directly, competition, etc.)

- Construction survey: survey on a regular basis (mainly three-day course) the annual vacation period (twice a year)

#### ■ Historial Architecture

Gogeonchuk club is to learn the traditional architecture, it is founded in 2002 and has a history of 9 years. It has a short history compared to other departments within the club, but has shown a very vigorous activity. Mostly go out and promote a better understanding of traditional architecture through the study, exploration and case analysis on the theory of traditional architecture. During the vacation destination by selecting the center and then it proceeds to create the model, such as spatial analysis tasks.

#### ■ Green Narae

Green Narae the OO University of Architecture was founded in October 2012 as an educational service club composed of undergraduates, find a place in places not exposed to touch helpers in the role, so to get up to them the joy that former haejyeoseo they are in the world the club is done. In addition, by configuring the students into teams to solve problems and work out systematically in a variety of ways when one service project is given.

### B. Student Competition Winners

Year	Competition Title	Awards	Name
2005	City of Daejeon Competition	High Honor	John Doe
2005	Ssang Yong Competition	Honorable Mention	
2005	Korea Design Competition	Honorable Mention	
2005	Docomomo	Honorable Mention	
2006	<div style="text-align: center;">Continue with the Appropriate Information</div> <div style="text-align: center;">Sample does not list all facts due to brevity</div>		
2006			
2006			
2006			
2006			
2006			
2006			
2006			
2006			
2006			

## C. Exhibitions, Site Visits, and Lectures

### ■ Exhibition

OO University hosts annual student exhibition in fall to display work that has been generated for that year and have a critic session.

### ■ Site Visit

Date	Course	Grade	Location	Notes
2009. 11	Studio 4	2nd year	Eugae Museum	
2009. 10	Studio 6	3rd year	Incheon World Architecture Fair	
2009. 11	Studio 8	4th year	Gwanghwamoon, Cheongaecheon	
2009. 11				
2010. 03				
2010. 03				
2010. 04				
2010. 05				
2010. 05				
2010. 10				
2010. 11				
2011. 04				
2011. 05				Continue with the Appropriate Information
2011. 05				
2011. 05				Sample does not list all facts due to brevity
2012. 05				
2012. 05				
2013. 03				
2013.04				
2013. 05				
2013. 05				
2013. 09				
2013. 10				
2013. 11				



■ Lectures

Date	Lecturer	Title	Location
2009. 09	Kim Chung Sik (Hyundai)	Exposed Concrete Design & Construction	E11 Seminar Room
2009. 09	Kim Jong Il (MA arch)	Zero Energy House	E11 Seminar Room
2009. 10	Jo Do Yeon (D&B arch)	Works	E11 Seminar Room
2009. 11	Hyun Eun Hae (Jungrim)	Works by Jungrim	E11 Seminar Room
2009. 11	Choi Jaein (Shinhwa)	Structure Engineering Office	E11 Seminar Room
2009. 11	Kim Gwang Ho (TAO)	From Design to Construction	E11 Seminar Room
2010. 03	Park Jong Moon (Cityhall)	Public Architecture	E11 Seminar Room
2010. 03	<div> <div></div> <div>Continue with the Appropriate Information</div> <div>Sample does not list all facts due to brevity</div> </div>		
2010. 04			
2010. 04			
2010. 05			
2010. 05			
2010. 09			
2010. 09			
2010. 10			
2010. 10			
2010. 11			
2011. 04			
2011. 05			
2012. 03			
2012. 03			
2012. 04			
2012. 05			
2012. 05			
2012. 11			
2012. 12			
2012. 12			
2013. 05			
2013. 05			
2013. 05			
2013. 11			

## II. Responses to the Previous Review

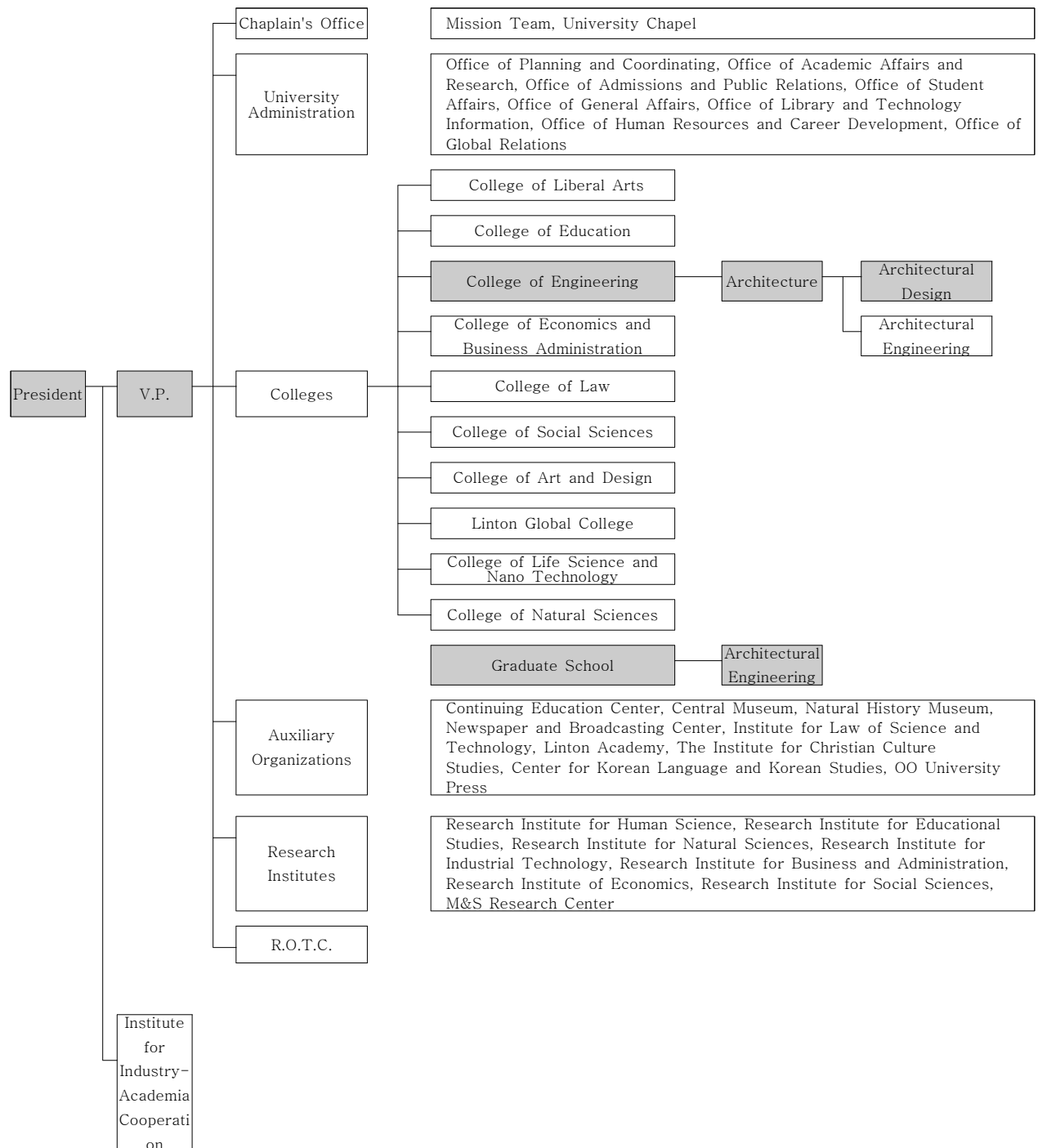
### 2.1 Program's responses to Previously "Not Met" or "Needs Improvement" Categories

- \*, Describe in detail "not met" and "needs improvement" categories
- \*\*, Does not apply to first time applicant
- \*\*\*, Continuous Accreditation Programs must fill out this section

OMITTED FOR CONFIDENTIALITY

### III. Program Organizational Chart

Department of Architecture is under the College of Engineering which is one of 10 Colleges at OO University, and is one of 11 departments within the College of Engineering. Our department offers a 4-yr Architecture Engineering Degree and a 5-yr Architecture Degree.



## IV. Faculty Information (2013-2/2014-1)

Classification			Name	Year of Birth	Terminal Degree	Name of Institution and the year terminal degree was received	Experience (Years)			Professional qualification (ex: licensed architect)	Degree of Activity (High, Moderate, Low, None)		
							Govt't/ Industry	Teaching	Present University		Professional/ Academic Society	Research	Industrial Consulting
Archit ectural Major	Full time	Professor											
		Associate Professor											
		Assistant Professor											
		Lecturer											
		Other non-tenure track if applicable											
		Total											
	Part time	Adjunct Professor											
		Invited Lecturer (or similar)											
		Other position if applicable (1)											
		Other position if applicable (2)											
Total													
Non-Architec tural Major		Full time											
		Part time											
		Total											
Total number of teachers													

## V. Enrolled Students

### 5.1 Student Enrollment List

#### A. 2013-2nd Semester

Unit: Number of People

Classification		Enr. Year	Entran ce Quota	Enrolled Student									Transfer Student									Total (1+2)	on leave	Remarks		
				2005	2006	2007	2008	2009	2010	2011	2012	2013	Total	2004	2005	2006	2007	2008	2009	2010	2011				Total	
Bachelor	5-yr	1st yr	35							1	1	36	38	-	-	-	-	-	-	-	-	-	38	1		
		2nd yr	30				1		9		22		32	-	-	-	-	-	-	-	-	-	32	18		
		3rd yr	30				3	13		14			30	-	-	-	-	-	-	-	-	-	30	18		
		4th yr	30			3	7	1	15				26	-	-	-	-	-	-	-	-	-	26	4		
		5th yr	30	2	5	7		12					26	-	-	-	-	-	-	-	-	-	26	3		
		subtotal	155	2	5	10	11	26	24	15	23	36	152	-	-	-	-	-	-	-	-	-	152	44		
	4-yr	Enr. Year	Entran ce Quota	4th yr									Transfer Student									Total (1+2))	on leave	Remarks		
				1999	2000	2001	2002	2003	2004	2005	2006	2007	Total	1999	2000	2001	2002	2003	2004	2005	2006				Total	
		1st yr		-	-	-	-	-	-	-	-	-	-	-	-	-	-	-	-	-	-	-	-	-	-	
		2nd yr		-	-	-	-	-	-	-	-	-	-	-	-	-	-	-	-	-	-	-	-	-	-	
		3rd yr		-	-	-	-	-	-	-	-	-	-	-	-	-	-	-	-	-	-	-	-	-	-	
		4th yr		-	-	-	-	-	-	-	-	-	-	-	-	-	-	-	-	-	-	-	-	-	-	
		subtotal		-	-	-	-	-	-	-	-	-	-	-	-	-	-	-	-	-	-	-	-	-	-	
	Total (5-year + 4-year program)		155	2	5	10	11	26	24	15	23	36	152	-	-	-	-	-	-	-	-	-	152	44		

B. 2014–1st Semester

Unit: Number of People

Classification		Enr. Year	Entran ce Quota	Enrolled Student										Transfer Student										Total (1+2)	on leave	Remarks	
				2005	2006	2007	2008	2009	2010	2011	2012	2013	2014	Total	2004	2005	2006	2007	2008	2009	2010	2011	Total				
Bachelor	5-yr	1st yr	35										33	33	-	-	-	-	-	-	-	-	-	33	1		
		2nd yr	35						2	15	1	26		44	-	-	-	-	-	-	-	-	-	44	29		
		3rd yr	29			1	2	1	9	1	15			29	-	-	-	-	-	-	-	-	-	29	23		
		4th yr	30				3	15	2	11				31	-	-	-	-	-	-	-	-	-	31	7		
		5th yr	30	1	1	4	6	3	14					29	-	-	-	-	-	-	-	-	-	29	5		
		subtotal	160	1	1	5	11	19	27	27	16	26	33	166	-	-	-	-	-	-	-	-	-	166	65		
	4-yr )	Enr. Year	Entran ce Quota	Enrolled Student											Transfer Student										Total (1+2)	on leave	Remarks
		1999	2000	2001	2002	2003	2004	2005	2006	2007		Total	1999	2000	2001	2002	2003	2004	2005	2006	Total						
		1st yr		-	-	-	-	-	-	-	-	-	-	-	-	-	-	-	-	-	-	-	-	-	-	-	-
		2nd yr		-	-	-	-	-	-	-	-	-	-	-	-	-	-	-	-	-	-	-	-	-	-	-	-
		3rd yr		-	-	-	-	-	-	-	-	-	-	-	-	-	-	-	-	-	-	-	-	-	-	-	-
		4th yr		-	-	-	-	-	-	-	-	-	-	-	-	-	-	-	-	-	-	-	-	-	-	-	-
		subtotal		-	-	-	-	-	-	-	-	-	-	-	-	-	-	-	-	-	-	-	-	-	-	-	-
	Total (5-year + 4-year program)		160	1	1	5	11	19	27	27	16	26	33	166	-	-	-	-	-	-	-	-	-	166	65	-	

## 5.2 Transfer Students

Transfer students are given credit for the courses they have taken at the previous institutions. General courses are recognized by the OO University policies and school regulations enforcement regulations and the courses related to Architecture follow program rules & regulations.

### 5.2.1 Rules and Regulation on Transfer Students from Other Institution

#### ■ Rules and Regulation on Transfer Student Admission and Credit Transfer

[Policy No. 17 (transfer students)]

① Students who can are eligible to enter as a second or third year must have completed similar or greater terms at the previous institution.

② Student with a bachelor's degree can transfer to the program in addition to the quota given to transfer students. However, they shall be less than 10% of total enrollment of that year.

③ Applicants who fail to be admitted will be determined separately. New (11/14/2013)

[Policy Article 32 (Transfer of credits)]

A screening in respect to transferring credits from previous university student will be by the department and later by the university.

[Administrative Instructions Article 66 (credit transfer students)]

1. Maximum number of transfer credits are as follows

	up till 2012	2013 and beyond	notes
College of Liberal Arts, College of Law, College of Social Sciences, Linton Global College	70 credits	64credits	
College of Engineering, Architecture, College of Art and Design, College of Natural Sciences	70 credits	68 credits	
With Bachelor Degree	72 credits	68 credits	

2. Major credits may be accepted up to a maximum of 15 credits per semester.

3. Review and credits recognized by the department ( unit) has to follow the departmental rules " Transfer OO credits ( OO credits educated , studied OO credits)

4. Major credits are recognized by subjects also recognized based on departmental review

5. The major credits are limited to the same subjects , the number of credits of college course entirely up to the number of university courses credits

It may be the same or higher grade will not be recognized and it exceeds the number of university courses credits

6. Transfer students shall calculate the GPA only grades earned in school graduation , college graduation credits recognized entirely Including the credits

Transfer students must complete the course in accordance with the curriculum of the department ( unit), as shown in the following paragraph.

1. Transfer students ( including undergraduate transfer students ) will be launched , including major required courses from the third year of 60 credits ( 108 credits majoring in Architecture ) To be completed more majors (including major recognized credit)
  2. The incorporation of Engineering Education Certification Program students depending on course for Engineering Education Certification Program Rules
  3. Architectural education program incorporating student is established to be completed courses in accordance with the provisions in Architecture Education Program ( 01/23/2014 )
- ③ transfer student changes majors cannot graduation early.

## 5.2.2 Rules and Regulation on Transfer Students from Other Department

OO University students who are majoring in other majors need to meet all regulatory requirements and graduation standards of architecture major and standards. OO University Policy on the major changes based on the credits and completion criteria are as follows:

### ■ Major changes based on the credit and complete criteria

[ Policy Article 19 2 ( Major Changes ( before )

① major changes and who wish to complete a two- semester ( before) with the permission of the President through the Department dean In case only once over a three- semester registration can be changed majors ( before ) revision ( 03.01.2007 , 06/02/2011 )

② Delete ( 02/01/2000 )

③ The major changes ( before) it should be given credit for acquisition of the department ( unit) .

④ details are decided sList Rules & Regulations on Policies on Transfer Students

[ Policy enforcement regulations Article 81 ( eligible );

① Major changes ( before) can apply to the period prescribed in the university who have completed at least two semesters. However, if you already majors of the history that has no potential or fourth grade promotion may apply .

② When you apply for transfer students and new students are not allowed teukgija major change in one university student majoring jaejeoksaeng this change of command should abolish the Department pursuant to the garden as an exception.

③ major changes in the foreign special new student can change majors with the exception only once , despite the above terms .

[ Policy enforcement regulations Article 82 ( starting principle );

① major change via the Member Dean of the period prescribed in the university only if there are seats to be chosen with the permission of the President .



② major change is possible seats within a range of 120% by footing the garden department (major) major management change seats available is managed by the cumulative admissions per year . However, the College of Education and Nursing and is determined separately based on the Higher Education Act .

③ major changes when applicants are expected to exceed the authorized personnel , the professor , but starting from the meeting can be added to a separate examination and interview.

④ The authorized a major change shall be registered in the semester , it can not leave of absence prior to the start date .

⑤ If you violate the preceding paragraph, the school may cancel the permit major changes .

### 5.2.3 Departmental Policy on Transfer Students

Credits graduation has been set to complete more than the minimum 160 credit for 10 semester courses , detail is divided into Major Required Courses 97 credits , 11 elective credits Major , family and cultural base 15 credits of required courses 25 credits. Content of the majors are largely consists of five areas ( culture , communication, design , technology, practical ) , and cultural contexts area history, theory , form , culture, cities, and technical areas are structural , environmental regulation, construction sector II organized and broken down . In addition, the SPC items needed for architectural training certification (hereinafter certification ) and to meet without exception . Architecture pillar to take the certification required courses and training programs and regulations stated in the bylaws regarding to Architecture .

Students are switched Article 9 , Article 10 , Article 10 Architecture Education Programs pursuant to regulations Korea Architecture Student Education Quality Assurance (KAAB) criteria set by performing Architecture Education program rules must meet all of the (SPC Student Performance Criteria)

#### List Departmental Policies on Transfer Students

[ Architecture Education program rules, Article 11 ( Incorporated , the acceptance of Jeongwasaeng )

① incorporated , shall be in accordance with accepted principles of Jeongwasaeng [Table 1] .

② transfer , Jeongwasaeng shall verify whether recognition in architectural education credits through the acquisition of existing programs in consultation with the supervisor.

[ Architecture Education program rules Article 9 ( Graduation Requirements )

If on the basis of the provisions of Architecture programs that meet the following requirements , the recognition that with the graduation of architectural education program requirements.

① Graduation is a graduate of the University of assessment results to the main headquarters .

② The certification of the required courses , despite paragraph (1) Results Main elective courses to be completed .

③ paragraph 2 shall be determined by certification required courses in Architecture Education Program operating regulations .

[ Architecture Education program rules, Article 10 ( graduation examination) ;

① graduation examination is to be carried separated by a graduated assessment of the circumstances and graduated from the Department of the school.

② The graduation is performed in a matter of department committee pursuant to Article 8 (3) provisions .

③ Steering Committee in the graduation subject student's individual bearing courses and Korea Architecture Education Quality Assurance (KAAB) is determined by student performance assessment criteria (Student Performance Criteria, hereinafter SPC ) shall omission of the SPC items created by a cross- table of items check whether meet the graduation requirement and whether Article 10 .

[ Architecture Education Programs bylaws Article 10 ( Designation of certification mandatory courses )

① ③ Article 10 in accordance with the provisions of Section Urban Design in Architecture Education Program , Asia geonchukron , haengtaeron environment , specifies the design practicum courses required for authentication .

## VI. Changes in the Curriculum

### 6.1 Introduction

#### 6.1.1 Degrees Offered and Overall Curriculum

##### A. Degree

Bachelor of Architecture, 5-yr Program

##### B. Overall Curriculum

Students are required to complete min of 160 credits in 10 semesters to graduate. Min of 108 credits out of 160 total credits are required courses for the major.

Here is a chart explaining required credits to graduate

[Ref 6.1] Credit Distribution (Based on 2012 Curriculum)

Required Credits to Graduate – 160 Credits	Major	Required	97 credits	
		Elective	21 credits	including 12 credits for accreditation
		Subtotal	118 credits	108 major-related credits
	Elective (Req'd)	Foundation	15 credits	fundamental courses
		Common Elective	16 credits	
		Req'd Practice	9 credits	
		Subtotal	40 credits	
		Practice	2 – 18 credits	

- Major-Related Courses
  - 118 credits are offered annually (Required 97 credits, Practice 21 credits)
  - Required to graduate : 108 credits (University Policy)
- Practice (Required)
  - Foundation : 15 credits (fundamental courses)
  - Common Elective : 16 credits
  - Required Practice : 9 credits
- Practice
  - If a student received 118 credits for Major-Related Courses and 40 credits for Practice (Required), he or she must complete at least 2 elective credits.
  - If a student received 108 min credits for Major-Related Courses, he or she must complete at least 12 elective credits.

## C. Major-Related Courses

### 1) Undergraduate Courses Offered

OOUniversity Architecture Program offers 118 Major-Related Courses. 15 foundation courses are offered for the 1st yr, and 97 required & 21 elective courses are offered for the 2nd yr through the 5th yr. (see ref. 6.2)

[Ref 6.2] Major-Related Courses (Based on 2012 Curriculum)

Foundation: 15 credits	fundamental courses	Design Studio I (3)	1st yr 1st semester
		Understanding Architecture (3)	
		Design Studio II (3)	1st yr 2nd semester
		Structure and Design(3) CAD(3)	
Major-Related: 118 credits	required	27 courses 97 credits	2~5th yr
	Practice	7 courses 21credits	2~5th yr

### 2) Student Performance Criteria and Curriculum

Academic Program offers 97 required major-related courses and 15 foundation courses to meet the requirements for SPC. In addition, we have assigned 4 courses to better assist our student to fulfill SPC requirements. Departmental Policies make sure the students completes these required courses for SPC. Major-related courses are divided into 5 sections: Communication, Cultural Context, Design, Technology, and Practice.

[Ref 6.3] Curriculum to reflect SPC requirements (Based on 2012 Curriculum)

Curriculum	Major-Related Req'd	97 credits	University Policy
	Foundation	15 credits	University Policy
	Acc. Required Practice	12 credits	Departmental Rules
	Total	124 credits	

## 6.1.2 Education Goals

OOUniversity Architecture Program establishes overall goals for the program and tailors each courses to follow the goals with detailed plans. SPC has been understood and incorporated and is shown in ref. 6.4

## [Ref 6.4] Education Goals and Plan

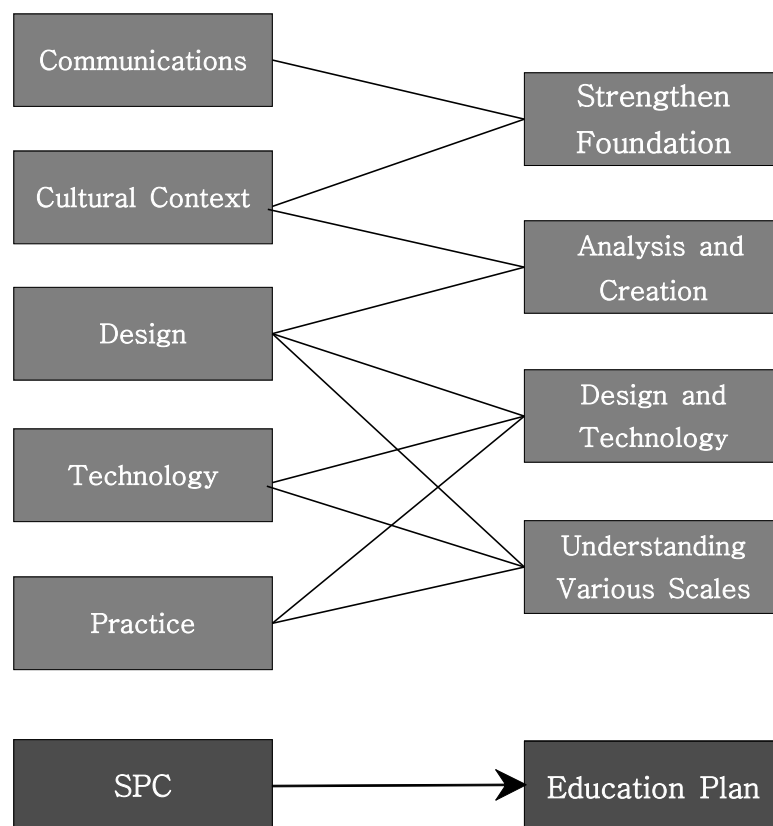
Goals		Plan
Integrated Education System	Analysis and Creation	<p>The courses focus on integration of analysis and creation as a learning tool for integrative thinking process. Design process is complex and many factors are superimposed onto the building. By the method of analysis, the building and its integrated ideas are understood. Each of these factors that affect the design are related and it is important to understand the integrated nature of projects.</p> <p>As an important resources for the design studio, the 100 case studies of notable architectural masterpieces are analyzed and becomes basis for a creative design project to follow.</p>
	Design and Technology	<p>Another important elements of the integrated design is to understand the relationship between design and technology. Even before the introduction of 5-yr architecture program, OO University's Architecture Program offered design courses that were taught jointly by both architecture design and architectural engineering faculties. Our program aims to promote the understanding of how technology integrates into building project, and we believe our students will have better capability of using technology as an integral part of design.</p>
	Understanding Various Scales	<p>This is to understand various scales in architecture that ranges from a scale of the city all the way down to architectural detail level. Architectural Design 8 (Urban Design Studio), Construction 9 Design (Graduation Design), and Architectural Design 10 (details of the graduation design) courses are taught collaterally to help students to understand these various scales that exist in architecture. The process begins with the 4<sup>th</sup> yr Urban Design Studio and continues to the 5<sup>th</sup> yr studio where they select individual parcels to explore different scales: city, building, and building detail.</p> <p>Through the understanding of various scales, students will develop an ability to work in multiple scales in design and in practice.</p>

### 6.1.3 Major-Related Education Plan

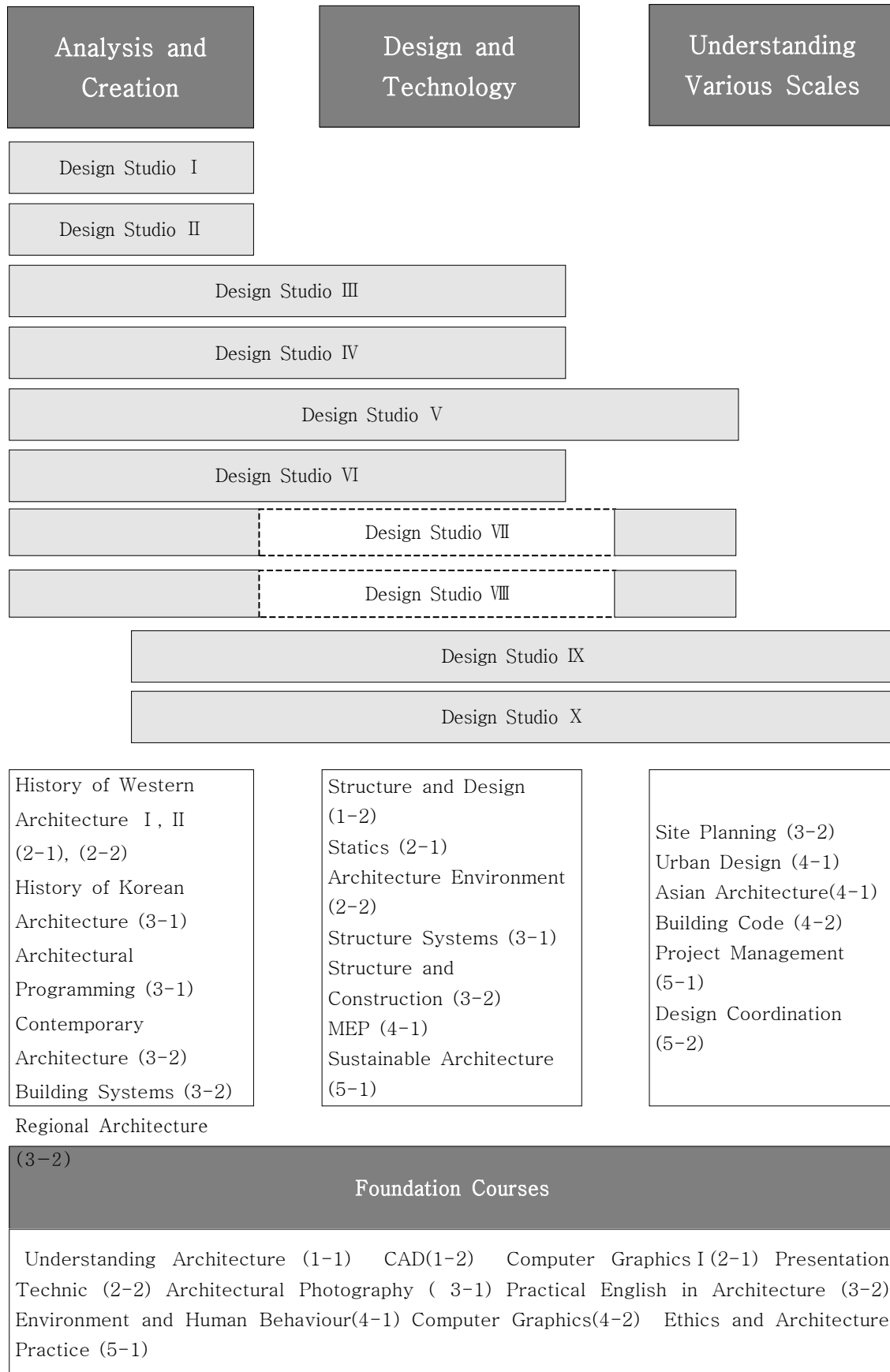
#### A. Education Plan

Core curriculum is based on the categories of KAAB's 5 sections (Communication, Cultural Context, Design, Technology, and Practice) and all courses are designed to teach student with specific goals to cover the SPC guideline. The program also emphasizes the goal to offer integrated education system that is established by the goal of the program.

Academic Program has been planned to execute our education goal with strengthening the foundation, Analysis and Creation, Design and Technology, and Understanding Various Scales. Design Studios and Lecture Courses also inter-relate as seen from Ref. 6.2.



Ref 6.1 Education Plan and SPC



## B. Core Curriculum

The program also emphasizes the goal to offer integrated education system that is established by the goal of the program.

Academic Program has been planned to execute our education goal with strengthening the foundation, Analysis and Creation, Design and Technology, and Understanding Various Scales. Design Studios and Lecture Courses also inter-relate as seen from Ref. 6.2.

### 1) 4-Tier System

Design Studios are made of 4 tiers. "Basic - Core - Advanced - Practice" and their goals are as listed.

[Ref 6.5] 4 Tiers

Levels	Curriculum	Goals	분석과 창작의 통합	Technolo gy과 디자인의 통합	스케일의 통합
Basic Program	1-1	<ul style="list-style-type: none"> <li>Basics</li> <li>- Form and Space</li> <li>- Creativity</li> </ul>			
	1-2				
Core Program	2-1	<ul style="list-style-type: none"> <li>Intro to Design</li> <li>- Reading</li> <li>- Form, Space</li> <li>Understanding Structure</li> <li>Design Methods</li> <li>- Site and Program Analysis</li> <li>- Concept and Transformation</li> <li>- Sustainable Design</li> </ul>			
	2-2				
Advanced Program	3-2	<ul style="list-style-type: none"> <li>Regionalism</li> <li>- Understanding Local and Urban</li> <li>- Understanding Building systems</li> <li>Urban Design</li> <li>- Neighborhoods</li> <li>- Reflecting Local Culture</li> <li>- Cultural and Historical Factors</li> </ul>			
	4-1				
Practice Program	5-1	<ul style="list-style-type: none"> <li>Practical Knowledge</li> <li>- Integration of Design and Technology</li> <li>- Practical Design</li> </ul>			
	5-2				

### 2) Inter-related curriculum between studio and lecture classes

The program aims to strengthening the link between lecture and studio courses with the intention of systematically interrelating related. In particular, 4th and 5th year courses such as Urban Design, Urban Design Project, Graduate Project (design by selecting one of the buildings of the results from the Urban Design Project), and Drawing Documentation are interrelated to give broad understanding of urban design,



architecture design, and details.

### **3) Various Design Studios and Teaching Methods**

Providing various learning opportunity to approach design to promote the right design ability. In the beginning of the program there are emphasis in understanding of the configuration system and configure the system through the construction of a building project, starting from analysis program (in-out approach), and to undertake the project (out-in approach) approaching from the site. During intermediate years these approaches are combined (in-out-in approach) as well as an attempt to understand systems and reuse existing space in the renovation projects. Advanced courses teach the relationship between individual buildings and the urban context. Students with experience in a variety of studios throughout the whole curriculum will explore various design approaches.

### **4) Promote Active Integration of Curricular and Extra-Curricular Activity**

A variety of educational contents including core curriculum and extra-curricular activities are provided to maximize the learning opportunity for the students. This program, with the support of the students' voluntary activities and departments, the participation of graduating seniors and local experts carried out through a variety of methods. Activities provided by the department includes domestic and foreign trips, various professional lectures, campus design competitions, international competitions (government-sponsored volunteer programs, career opportunity to prepare their graduates. There also are student clubs such as volunteer club (Green Narae), Habitat, and cross-year clubs.

## **C. Design Studio Stages**

OO University's Architecture Program's next objective is to provide an integrated educational program. The curriculum has these three underlying integrated education ideas: "Analysis and Creation", "Technology and Design", and "Understanding Various Scales."

### **1) Integrated Education 1: Analysis and Creation**

The courses focus on integration of analysis and creation as a learning tool for integrative thinking process. Design process is complex and many factors are superimposed onto the building. By the method of analysis, the building and its integrated ideas are understood. Each of these factors that affect the design are related and it is important to understand the integrated nature of projects.

As an important resources for the design studio, the 100 case studies of notable architectural masterpieces are analyzed and becomes basis for a creative design project to follow.

## **2) Integrated Education 2: Design and Technology**

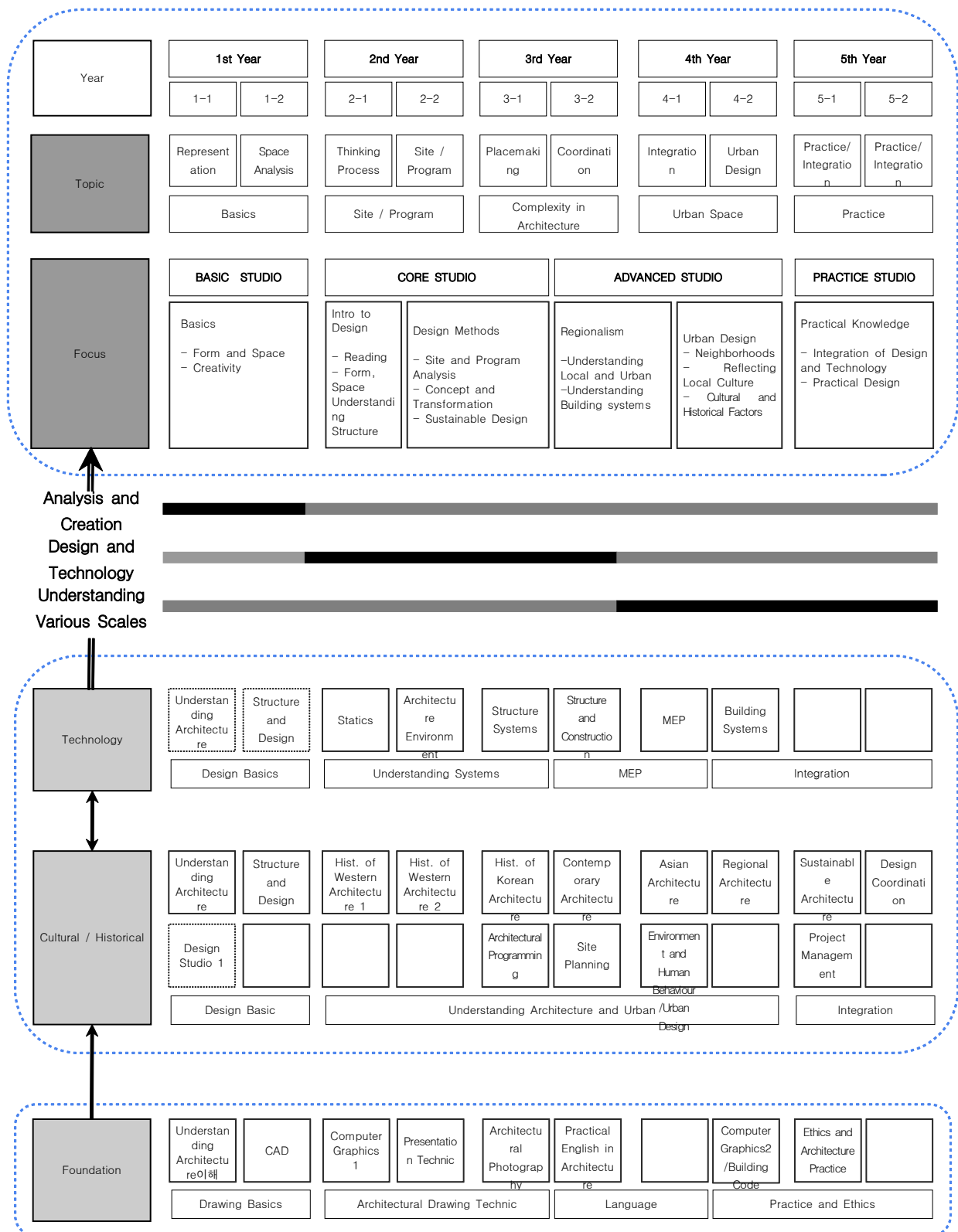
Another important elements of the integrated design is to understand the relationship between design and technology. Even before the introduction of 5-yr architecture program, OO University's Architecture Program offered design courses that were taught jointly by both architecture design and architectural engineering faculties. Our program aims to promote the understanding of how technology integrates into building project, and we believe our students will have better capability of using technology as an integral part of design.

## **3) Integrated Education 3: Understanding Various Scales**

This is to understand various scales in architecture that ranges from a scale of the city all the way down to architectural detail level. Architectural Design 8 (Urban Design Studio), Construction 9 Design (Graduation Design), and Architectural Design 10 (details of the graduation design) courses are taught collaterally to help students to understand these various scales that exist in architecture. The process begins with the 4<sup>th</sup> yr Urban Design Studio and continues to the 5<sup>th</sup> yr studio where they select individual parcels to explore different scales: city, building, and building detail.

Through the understanding of various scales, students will develop an ability to work in multiple scales in design and in practice.

The Architecture Program at OO University starts with an analysis projects in the lower grades, and follows up with the classes that focus on understanding of form, and building systems along with architecture history courses such as Western architecture 1 & 2, Modern Architecture, Korean Architecture in the intermediate grades. The program focuses on integrated design process and understanding of various scales towards the end of the program)



Ref 6.3 Inter-Relationship between Courses

[Ref 6.6] Design Courses and Lecture Courses

YR	SM	LEVEL	DESIGN STUDIOS				Lecture Courses						
			Form/Space	Program/Site	Architecture/Urban	Integration	Analysis and Creation	Design and Technology	Various Scales	Foundation	Practice		
											Req'd	Common	Recommended
1	1	Basic Design Studio	Design Studio I							Understanding Architecture	List Electives	List Electives	
	2		Design Studio II					Structure and Design		CAD			
2	1	Core Design Studio		Design Studio III			History of Western Architecture I	Statics		Computer Graphics I			
	2			Design Studio IV			History of Western Architecture II	Architecture Environment		Presentation Technic			
3	1				Design Studio V		History of Korean Architecture Architectural Programming	Structure Systems		Architectural Photography			
	2				Design Studio VI		Contemporary Architecture	Structure and Construction	Site Planning	Practical English in Architecture			
4	1	Advanced Design Studio			Design Studio VII			Building Systems	Urban Design Asian Architecture	Environment and Human Behaviour			
	2				Design Studio VIII		Regional Architecture Building Systems		Building Code	Computer Graphics II			
5	1	Practice Studio				Design Studio IX		Sustainable Architecture	Project Management	Ethics and Architecture Practice			
	2					Design Studio X			Internship				

## [Ref 6.7] Architecture Design Studio

YR	SM	Goals		Topics		Tiers			Notes
						Approach & Scope	Scale	Location	
1	1	DESIGN STUDIO I – conceptual ideas to buildable forms – basic principle in from and space arrangement	Basic Design Studio	Representation Methods	Drawing ↔ Presentation	Element	–	The course is designed to understand the basics of architecture design starting from understanding/analysis of a project to reading drawings.	
	2	DESIGN STUDIO II – basic architectural elements – form and space		Form and Space	Concept ↔ Composition		–	The course is focused in architectural form and space. Assignments includes understanding different forms and spaces in architecture and representing them in multiple mediums.	
2	1	DESIGN STUDIO III							
	2	DESIGN STUDIO IV							
3	1	DESIGN STUDIO V							
	2	DESIGN STUDIO VI		Continue with appropriate information. Omitted for brevity					
4	1	DESIGN STUDIO VII							
	2	DESIGN STUDIO VIII							
5	1	DESIGN STUDIO IX							
	2	DESIGN STUDIO X							

[Ref 6.8] Lecture Courses

	Courses	Tier	Goal	Description	Related Studio
Analysis and Creation	History of Western Architecture 1	basic	Understanding Architectural History of West from different periods.	This course is offered to give students understanding of how western architecture has evolved. Well known examples of historically important architecture are introduced.	
	History of Western Architecture 2	advanced	Understanding modern western architectural history.	This course is a continuation of Western History 1 course and focus on more modern examples of western architecture. Western History 1 is a pre-requisite.	
	History of Korean Architecture	basic			
	Architectural Programming	basic			Design StudioVI
	Contemporary Architecture	basic			
	Building Systems	advanced			Design StudioIX
	Regional Architecture	basic			Design StudioVI
Design and Technology	Structure and Design	basic		Continue with appropriate information.	
	Statics	basic		Omitted for brevity	
	Architecture Environment	basic			
	Structure Systems	advanced			Design StudioVI
	Structure and Construction	basic			Design StudioVI
	MEP	advanced			Design StudioIX
	Sustainable Architecture	advanced			Design StudioIX

	Courses	Tier	Goals	Description	Related Studio
Understanding Various Scales	Site Planning	basic			Design StudioVII
	Urban Design	advanced			Design StudioVIII
	Asian Architecture	advanced			
	Building Code	advanced			
	Project Management	advanced			
	Design Coordination	advanced			
Foundation	Understanding Architecture	basic			
	CAD	basic			
	Computer Graphics 1	basic			Design StudioIII
	Presentation Technique	advanced			Design StudioIV
	Architectural Photography	basic			
	Practical English in Architecture	basic			
	Environment and Human Movement	advanced			
	Computer Graphics 2	advanced			
	Ethics and Architectural Practice	advanced			

## 6.2. Curriculum by Year

### A. 2003

Categories			1YR	Credit	2YR	Credit	3YR	Credit	4YR	Credit	5YR	Credit	Total Credits
Elective (Maj.Basic)			College Mathematics 정역학	3 3									6
Required	Cultural Context												
	Design	Communication	CAD	3									3
		Design	Design Studio1 Design Studio2	3 3	Design Studio3 Design Studio4	5 5	Design Studio5	5					21
	Technology	Structure	Structure and Design	3									3
		MEP											
		Construction											
	Practice												
Subtotal				18		10		5					33
Elective	Cultural Context				History of Western Architecture1 History of Western Architecture2	3 3	Housing Theory History of Korean Architecture1 History of Korean Architecture2	3 3 3	Asian Architecture Urban Design Environment and Human Behaviour Architectural Programming Site Planning	3 3 3 3 3	Sustainable Architecture Contemporary Architecture1 Contemporary Architecture2	3 3 3	39
	Design	Communication			Computer Graphics Representation Methods Formmaking	3 2 2	Architectural Photography	3					10
		Design					Design Studio6	5	Design Studio7 Design Studio8	5 5	Design Studio9 Design Studio10	5 5	25
	Technology	Structure			Statics1 Statics2	3 3	Structure Systems	2					8
		MEP			Architecture Environment	3	E.S.A	3	Building Systems	3	Landscape Design	2	11
		Construction					Structure and Construction Design and Materials	3 2	Seminar 1	2	Seminar 2	2	9
	Practice								Building Code	3	Design and Development Project Management Interior Design	3 3 3	12



Subtotal				22		27		33		32	114
Credit / YR		18		32		32		33		32	147

## B. 2006

Categories			1YR	Credit	2YR	Credit	3YR	Credit	4YR	Credit	5YR	Credit	Total Credits
Elective (Maj.Basic)			College Mathematics Statistics	3 3									6
Required	Cultural Context												
	Design	Communication											
		Design	Design Studio1 Design Studio2	3 3	Design Studio3 Design Studio4	5 5	Design Studio5	5					21
	Technology	Structure	Structure and Design	3									3
		MEP											
		Construction											
	Practice												
Subtotal				15		10		5					30
Elective	Cultural Context				History of Western Architecture1 History of Western Architecture2	3 3	History of Korean Architecture1 History of Korean Architecture2 Housing Theory	3 3 3	Urban Design Asian Architecture Environment and Human Behaviour Architectural Programming Site Planning	3 3 3 3	Sustainable Architecture Contemporary Architecture1 Contemporary Architecture2	3 3 3	39
	Design	Communication	CAD	3	Computer Graphics Representation Methods Formmaking	3 2 2	Architectural Photography	3					13
		Design					Design Studio6	5	Design Studio7 Design Studio8	5 5	Design Studio9 Design Studio10	5 5	25
	Techno	Structure				Statics1	3	Structure Systems	2				

				Statics2	3							
	logy	MEP		Architecture Environment	3	E.S.A	3	Building Systems	3	Landscape Design	2	11
		Construction				Structure and Construction Design and Materials	3 2	Seminar 1	2	Seminar 2	2	9
		Practice						Building Code	3	Design and Development Project Management Interior Design	3 3 3	12
Subtotal			3		22		27		33		32	117
Credit / YR			18		32		32		33		32	147

### C. 2007

Categories			1YR	Credit	2YR	Credit	3YR	Credit	4YR	Credit	5YR	Credit	Total Credits
Elective (Maj.Basic)			College Mathematics	3									6
			College Mathematics	3									
Required	Cultural Context				Architectural Programming		Site Planning						
					History of Western Architecture1	3	Contemporary Architecture	3					
					History of Western Architecture2	3	History of Korean Architecture	3	Asian Architecture	3	Sustainable Architecture	3	30
							Sustainable Design	3	Regional Architecture	3			
Design	Communication				Computer Graphics1	3							6
					Presentation Technic	3							
	Design		Design Studio1	3	Design Studio3	5	Design Studio5	5	Design Studio7	5	Design Studio9	5	
			Design Studio2	3	Design Studio4	5	Design Studio6	5	Design Studio8	5	Design Studio10	5	46
Technology	Structure		Structure and Design	3	Statics	3	Structure Systems	3					12
					Structure and	3							

					Construction Architecture Environment	3			Building Systems	3			6
		MEP							Building Systems	3			3
		Construction							Building Systems	3			3
	Practice								Building Code	3			3
Subtotal				15		34		25		25		13	112
Elective	Cultural Context		Understanding Architecture	3			Environment and Human Behaviour	3	Urban Design	3			9
	Design	Communication	CAD	3			Architectural Photography	3	Computer Graphics2	3			9
		Design											
	Technology	Structure											
		MEP					Environment and Human Behaviour	3			Landscape Design	3	6
		Construction					Design and Materials	3	Professional Licensure	3			6
	Practice										Ethics and Architecture Practice Interior Design Internship	3 3 3	9
Subtotal				6			12		9		12	39	
Credit / YR				21		34		37		34		25	151

# D. 2010

Categories			1YR	Credit	2YR	Credit	3YR	Credit	4YR	Credit	5YR	Credit	Total Credits
Elective			College Mathematics Statistics	3 3									6
Required	Cultural Context				History of Western Architecture1	3	Site Planning Contemporary Architecture History of Korean Architecture Architectural Programming	3 3 3 3	Regional Architecture	3	Sustainable Architecture	3	21
	Design	Communication			Computer Graphics1 Presentation Technic	3 3	Practical English in Architecture	3					9
		Design	Design Studio1 Design Studio2	3 3	Design Studio3 Design Studio4	5 5	Design Studio5 Design Studio6	5 5	Design Studio7 Design Studio8	5 5	Design Studio9 Design Studio10	5 5	46
	Technology	Structure	Structure and Design	3	Statics	3	Structure Systems	3					9
		MEP			Architecture Environment	3			Building Systems	3			6
		Construction			Structure and Construction	3			Building Systems	3			6
	Practice								Building Code	3	Ethics and Architecture Practice Project Management	3 3	9
	Subtotal			15		28		28		22		19	112
Elective	Cultural Context		Understanding Architecture	3	History of Western Architecture2	3	Urban Design	3	Environment and Human Behaviour Asian Architecture	3 3			15
	Design	Communication	CAD	3			Architectural Photography	3	Computer Graphics2	3			9
		Design											
	Technology	Structure											
		MEP											

	Construction											
	Practice									Internship	3	3
Subtotal			6		3		6		9		3	27
Credit / YR			21		31		34		31		22	139

E. 2012

Categories			1YR	Credit	2YR	Credit	3YR	Credit	4YR	Credit	5YR	Credit	Total Credits
Elective (Maj.Basic)													
Required	Cultural Context		Understanding Architecture	3	History of Western Architecture1	3	History of Korean Architecture Architectural Programming Site Planning Contemporary Architecture	3 3 3 3	Regional Architecture	3	Sustainable Architecture	3	24
	Design	Communication	CAD	3	Computer Graphics1 Presentation Technic	3 3	Practical English in Architecture	3					12
		Design	Design Studio1 Design Studio2	3 3	Design Studio3 Design Studio4	5 5	Design Studio5 Design Studio6	5 5	Design Studio7 Design Studio8	5 5	Design Studio9 Design Studio10	5 5	46
	Technology	Structure	Structure and Design	3	Statics	3	Structure Systems	3					9
		MEP			Architecture Environment	3			Building Systems	3			6
		Construction					Structure and Construction	3	Building Systems	3			6
	Practice								Building Code	3	Ethics and Architecture Practice Project Management	3 3	9
	Subtotal				15		25		31		22		19
Electi	Cultural Context				History of Western	3			Environment and	3			15

ve					Architecture2				Human Behaviour Asian Architecture Urban Design	3 3			
	Design	Communication					Architectural Photography	3	Computer Graphics2	3			9
		Design											
	Techno logy	Structure											
		MEP											
		Construction											
	Practice										Internship	3	3
Subtotal					3		3		12		3	21	
Credit / YR				15	28		34		34		22	133	

## 6.3. Course Description

### A. Design Courses

Course	Design Studio I	Maj.Basic	Course #	18364	Credits	3-0-6-(6)
Description	The course is designed to understand the basics of architecture design starting from understanding/analysis of a project to reading drawings.					
Course	Design Studio II	Maj.Basic	Course #	18704	Credits	3-0-6-(6)
Description	The course is focused in architectural form and space. Assignments includes understanding different forms and spaces in architecture and representing them in multiple mediums.					
Course	Design Studio III	Required	Course #	18716	Credits	5-0-10-(10)
Description						
Course	Design Studio IV	Required	Course #	18717	Credits	5-0-10-(10)
Description						
Course	Design Studio V	Required	Course #	18718	Credits	5-0-10-(10)
Description						
Course	Design Studio VI	Required	Course #	18765	Credits	5-0-10-(10)
Description						
Course	Design Studio VII	Continue with appropriate information			Credits	5-0-10-(10)
Description	Omitted for brevity					
Course	Design Studio VIII	Required	Course #	18736	Credits	5-0-10-(10)
Description						
Course	Design Studio IX	Required	Course #	18740	Credits	5-0-10-(10)
Description						
Course	Design Studio X	Required	Course #	18745	Credits	5-0-10-(10)
Description						

## B. Cultural Context Courses

Course	Understanding Architecture	Electives	Course #	20275	Credits	3-3-0-0
Description						
Course	History of Western Architecture I	Required	Course #	18720	Credits	3-3-0-0
Description						
Course	History of Western Architecture II	Electives	Course #	18722	Credits	3-3-0-0
Description						
Course	History of Korean Architecture	Required	Course #	18740	Credits	3-3-0-0
Description						
Course	Architectural Programming	Required	Course #	18734	Credits	3-3-0-0
Description						
Course	Site Planning	Required	Course #	10912	Credits	3-3-0-0
Description						
Course	Contemporary Architecture	Required	Course #	13989	Credits	3-3-0-0
Description						
Course	Regional Architecture	Required	Course #	20282	Credits	3-3-0-0
Description						
Course	Environment and Human Behaviour	Electives	Course #	18738	Credits	3-3-0-0
Description						
Course	Asian Architecture	Electives	Course #	18735	Credits	3-3-0-0
Description						
Course	Urban Design	Electives	Course #	11019	Credits	3-3-0-0
Description						



Course	Sustainable Architecture	Required	Course #	18746	Credits	3-3-0-0
Description						

## C. Communication Courses

Course	CAD	Electives	Course #	18715	Credits	3-2-2-0
Description						

Course	Computer Graphics I	Required	Course #	10791	Credits	3-2-2-0
Description						

Course	Presentation Technic	Required	Course #	20277	Credits	3-2-2-0
Description						

Course	Architectural Photography	Electives	Course #	18727	Credits	3-2-2-0
Description						

Course	Practical English in Architecture	Required	Course #	20634	Credits	3-3-0-0
Description						

Course	Computer Graphics II	Electives	Course #	19792	Credits	3-2-2-0
Description						

#### D. Technology Courses

Course	Structure and Design	Maj.Basic	Course #	18701	Credits	3-3-0-0
Description						
Course	Statics	Required	Course #	10614	Credits	3-3-0-0
Description						
Course	Architecture Environment	Required	Course #	18723	Credits	3-2-2-0
Description						
Course	Structure Systems	Required	Course #	20279	Credits	3-3-0-0
Description						
Course	Structure and Construction	Required	Course #	20276	Credits	3-3-0-0
Description						
Course	Building Systems	Required	Course #	10162	Credits	3-3-0-0
Description						
Course	Building Systems	Required	Course #	20283	Credits	3-3-0-0
Description						

## E. Practice Courses

Course	Building Code	Required	Course #	10155	Credits	3-3-0-0
Description						
Course	Ethics and Architecture Practice	Required	Course #	20284	Credits	3-3-0-0
Description						
Course	Project Management	Required	Course #	20635	Credits	3-3-0-0
Description						
Course	Internship	Electives	Course #	20286	Credits	3-0-6-(6)
Description						

## 6.4. Student Performance Criteria Matrix

(2014-1 30SPC Categories)

◎ Understand. ● Apply.

YR		Required Course  *Required for Accreditation	Communication		Cultural Context								Design										Technology										Practice				Total
			1	2	3	4	5	6	7	8	9	10	11	12	13	14	15	16	17	18	19	20	21	22	23	24	25	26	27	28	29	30					
			Oral and Literal Communication	Various means of expression	Architecture, Science, Technology, and Fine Art	World History of Architecture and Tradition	History of Korean Architecture	Architecture and Society	Human behaviour	Sustainable Architecture and City	Form and Spatial Organization	Analysis and Programming	Historical and Cultural Context of a Site	Site Preparation	Barrier Free Design	Safety, Fire Protection and Emergency Egress	Integration of Buildings in Design	Design of Addition/Alteration, Repair, and Maintenance	Design of Architecture and City	Integrated Design	Principles of Building Structural Engineering	Structural System	Sustainable Means of Environment Control	Environment Control Systems	Building Service Systems	Application of Computer Technology	Building Materials and Recycling	Construction Procedure and Construction Management	Ethics of Architects and Professional Obligation	Project Carry out and Role of Architects	Building Code and Regulation	Operation and Management of Architectural Practice					
I	1	Understanding Architecture			◎				◎																								2				
		Design Studio I		●						●																							2				
		Design Studio II	●							●																							2				
	2	CAD		●																					◎								2				
		Structure and Design			◎															◎													2				
II		History of Western Architecture I			◎	◎																											2				
	1	Computer Graphics I		●																					◎								2				
		Statics																		◎	◎												2				
		Design Studio III		●						●	●																						3				
		Design Studio IV												●		●	●																3				
	2	Presentation	●	●																													2				
		Technic Architecture Environment																				◎	◎										2				
III		History of Korean Architecture					◎														◎												2				
	1	Architectural Programming							◎			●			●																		3				
		Structure Systems																		◎	◎					◎							3				
		Design Studio V										◎				●						◎											5				
		Design Studio VI	●											●			●	●															4				
		Site Planning						◎				●						●															3				
	2	Contemporary Architecture				◎	◎			◎																							3				
		Structure and Construction															●									◎	◎						3				
		Practical English in Architecture	●																													◎	2				
IV		Building Systems													●							◎	◎									3					
	1	*Urban Design(req)									●							●															2				
		*Asian Architecture(req)				◎	◎	◎																									3				
		*Environment and Human Behaviour(req)							◎						●																		2				
		Design Studio VII								●	●		●			●		●															5				
	2	Design Studio VIII	●	●				◎				●						●															5				

[illegible]

## Curriculum Student Performance Criteria Matrix – Electives (2014-1 30SPC Categories)

© Understand. ● Apply.

YR			Courses (Electives)	Communication		Cultural Context						Design								Technology										Practice					Total
				1	2	3	4	5	6	7	8	9	10	11	12	13	14	15	16	17	18	19	20	21	22	23	24	25	26	27	28	29	30		
				Oral and Literal Communication	Various means of expression	Architecture, Science, Technology, and Fine Art	World History of Architecture and Tradition	History of Korean Architecture and Tradition	Architecture and Society	Human behavior	Sustainable Architecture and City	Form and Spatial Organization	Analysis and Programming	Historical and Cultural Context of a Site	Site preparation	Barrier Free Design	Safety Protection and Emergency Egress	Integration of Building Systems in Design	Design of Addition/ Alternation, Repair, and Maintenance	Design of Architecture and City	Integrated Design	Principles of Building Structural Engineering	Structural System	Sustainable Means of Environment Control	Environmental Control Systems	Building Service Systems	Application of Computer Technology	Building Materials and Recycling	Construction Procedure and Construction Management	Ethics of Architects and Professional Obligation	Project Carry out and Role of Architects	Building Code and Regulation	Operation and Management of Architectural Practice		
II	2	History of Western Architecture II			◎	◎																										2			
III	1	Architectural Photography																														0			
IV	2	Computer Graphics II		●																				◎								2			
subtotal			0	1	1	1	0	0	0	0	0	0	0	0	0	0	0	0	0	0	0	0	0	0	1	0	0	0	0	0	0				
총 Total			5	7	5	4	3	5	3	4	4	6	3	3	4	5	4	3	5	2	3	4	3	3	4	3	2	3	3	3	4				

## 6.5. Rules on Electives

Another important part of completing the professional degree courses are the elective liberal arts subjects. They are composed of Major Basic, common culture course and organized into a total of 40Credit.

As a liberal arts curriculum common culture is required to OO University all students, Christianity and humanity, thinking and expression, Practical English, information areas and is selected from architectural recommended courses of liberal arts to complete a certain minimum completion Credits of students in basic general and supporting the liberal arts education.

Major basic culture elective is organized by the department and faculty, or academic groups according to the characteristics of each department. Major basic subjects that apply to the program in the Faculty of Architecture since 2006. Common Design Studio I, Design StudioII, Structure and Design, College Mathematics, Statistics such as these are maintained 2012 year undergraduate majors are completely separate Design Studio I, Design StudioII Understanding of Construction, Structure and Design, CAD, including five courses, consists of 15Credit has been operating in basic subjects required for entry majoring in Architecture.

[Ref 6.9] Elective Courses

Cat.		Req'd, Option	Subject	Course	Year/Semester	Credit	Hour	
Ele ctiv es		Req'd	Christianity	Bible and Modern Society	1YR 1, 2 SM	3	3	
				Chapel	1YR 1, 2 SM 2YR 1, 2 SM	0	4	
			Thought and Expression	Understanding Language	1YR 1, 2 SM	3	3	
			Practical English	English I ,II	1YR 1, 2 SM	2×2=4	4	
		Req'd Option					2×2=4	4
			Continue with appropriate information. Omitted for brevity				2	2
		Recom mende d					9	9
	Maj or basi c	Req'd					15	21
	Total						40	(44)

[Ref 6.10] Core and Elective Courses

구 분			Credit
Required Credits to Graduate (160)	Major-Related Credit (108)	Required	97
		Electives	11
	Major Elective Credit (40)	Major Basic	15
		Common	16
		Elective	9
	Elective		12

## 6.6. Design Split and Instructor Selection for Students

Architecture and Design Studio can consist of two semesters in 2011 to the current total of 14 studios. Each Design Studio is 1YR 9 myeong to ensure adequate tutoring AA possible time more than 40 minutes per student per week, 2-5YR is organized by the studio up to 15 per name. 1YR is 3Credit 6 hours, 2-5YR is organized into operating 5Credit 10 hours, two people full-time faculty lecturer or full-time professors 1 person (architects) are taught by faculty members 1-2. Students of the studio selection is important in that it gives students the opportunity to receive extensive training in accordance with the diverse selection of Design faculty. Therefore, the architecture and the placement in the Design Studio, select the option of voluntary students is to be ensured as much as possible.

## 6.7 Rules on Pre-requisites, Major Required, Major Electives

OO University Architecture Education programs taught in a variety of disciplines, such as team teaching courses in Architecture Design Studio A Design Technology- integrated design team to achieve educational goals of the framework regions and areas in the Design Studio Design for teaching, facilities and environment areas and areas Design it consists of a comprehensive and integrated process that consists of the Building Systems and B.

Curriculum of the program is presented in order to obtain a bachelor's degree in Architecture, specialty construction and curriculum that requires systematic majors earn A.

Curriculum consists of a major in compulsory courses (a total of 97Credit) by YR / semester, all students configured to systematically complete the whole process of architecture majors, especially Design Curriculum is to take step by step to the Design Studio I ~ X and in principle. Along with opening a variety of specialty choice Courses by subject areas, and by so complete a major Electives (total 11Credit more), depending on area-specific choesoyi could Credit standards, while giving students a wide and spacious Courses options, majoring been advanced in each subject area configuration and training can be done to help.

The architecture majors and leads to systematic curriculum completed by presenting each YR / semester Major compulsory courses of the curriculum and area-specific specialty Electives and gyogwayi can process model considering the linkages with each Design Studio of all liberal arts curriculum and General Electives.

## 6.8 Student SPC Completion Checklist

OO University Architecture Education program has been operating for systems that can meet the students while meeting specific individual areas at the same time SPC Credit completion through systematic management requirements such as:

Most of the Courses designated as compulsory subjects for the SPC entry



Most of Architecture Courses Majors Maj.Basic (15Credit) and major required courses specified by the regulations (97Credit) so that all students must complete (2008), and has a bachelor's operations and to complete all previous entrants also through the course map .

In the case of entrants before 2008 Architecture Education Certificate (hereinafter certificate) criteria are met over the course map

Previous entrants in 2008, and is to meet the SPC items before graduating from the course map, and when necessary to meet certification standards through the summer semester operating. (See Figure 6.4)

Architecture program rules and regulations (the regulations) to meet certification standards through the enactment

Major Electives In addition to required courses to meet all of the certification criteria by assigning weights to Certification A compulsory subjects (12Credit) Subject to the provisions of Architecture program required (2014.1) and regulations (2014. 3) the students are also required to attend.

Subject to provisions recognized by the Curriculum replaced the previous revamp subject to the regulations and to take the bachelor's operations meet the certification criteria.

Students complete individual subjects Matrix table creation Status

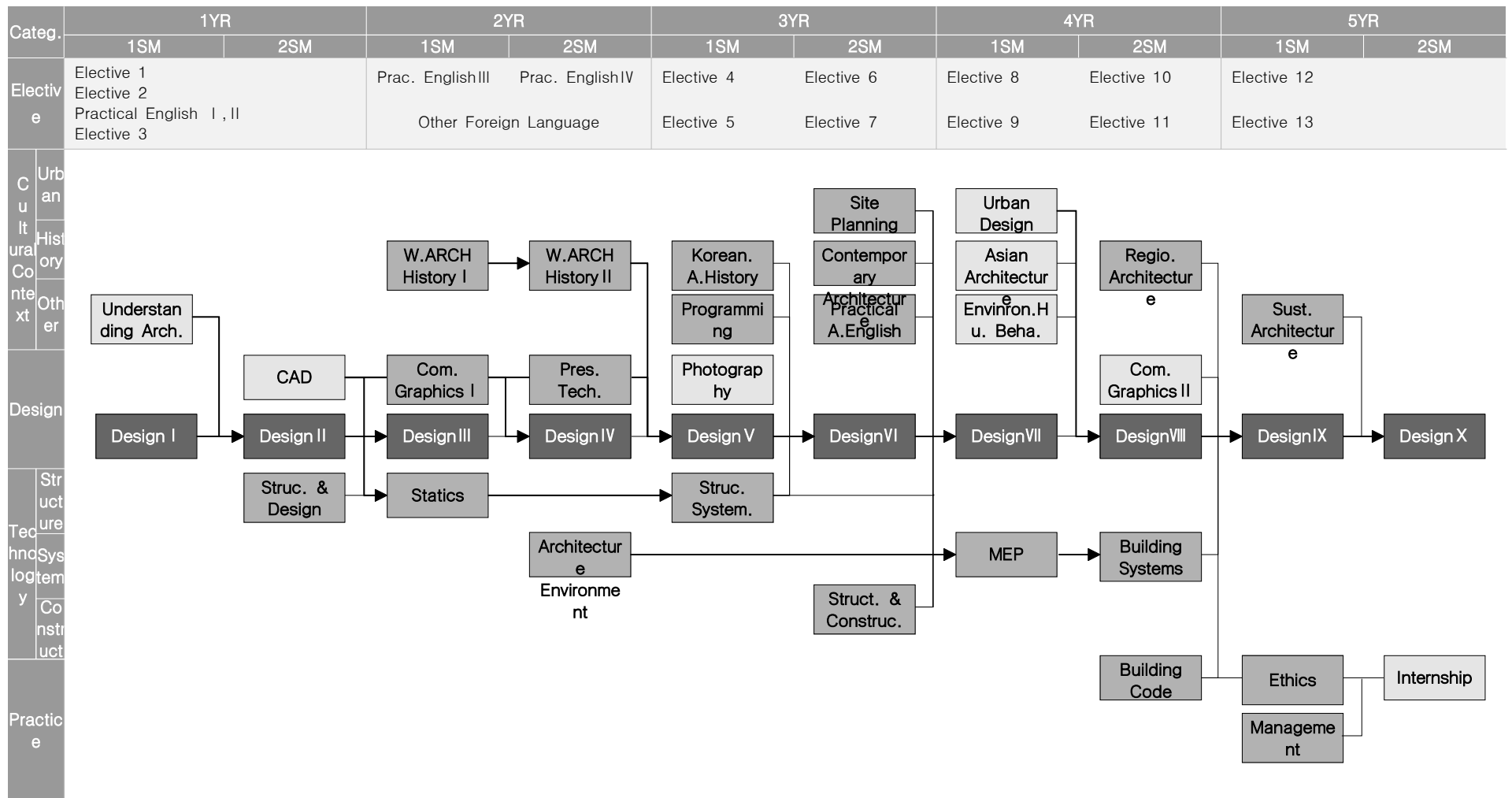
Every semester students to write a personal check for Matrix sulfur Lishu meet state certification standards, and has always needed to complete the map and the individual through the Matrix during attend map.

transfer pupil, before the student management system for bachelor and bijeongongja

In the case of incorporation, subject to examination for determining the alternate recognized in previous courses taken, and all other Courses are required to meet graduation standards and regulations on certification standards.

In the case of students before, Maj.Basic course, but admitted that all the others Roasting Courses You are required to meet graduation standards on certification standards and regulations, and guidance and always particular to complete the individual Matrix through the course map (see Figure 6.5 Reference)

For all bijeongongja Courses are required to meet graduation standards and regulations on certification standards.



Ref 6.6 Curriculum Flow Chart

## VII. List of Lectures

Courses			Enrolled Students	Course	# of Class es	Total Enrollment								average number of students/c lass	class types				
Categories	Course #	YR				Under 5-Yr Program						All Other	total		lecture	studio	present ation	other	
			1YR	2YR	3YR	4YR	5YR	subtotal											
Req'd	2014-1 SM	18364	1	33	Design Studio I	4	33					33		33	8.25	20	80		
		20275	1	33	Understanding Architecture	1	33		5			38		38	38	60	10	30	
		18716	2	44	Design Studio III	3		44				44		44	14.6	10	90		
		18720	2	44	History of Western Architecture I	1		44	1			45		45	45	60	10	30	
		10614	2	44	Statics	1		44		1	2	47		47	47	60	10	30	
		19791	2	44	Computer Graphics I	2		44			1	45		45	22.5	20	80		
		18718	3	29	Design Studio V	3			29	1		30		30	10	10	90		
		20278	3	29	History of Korean Architecture	1			29	2	1	32		32	32	60	10	30	
		20279	3	29	Structure Systems	1			29	1		30		30	30	60	10	30	
		18734	3	29	Architectural Programming	1			28	2		30		30	30	60	10	30	
		18733	4	31	Design Studio VII	2				30	1	31		31	15.5	10	90		
		10162	4	31	Building Systems	1				29	1	30		30	30	60	10	30	
		18740	5	29	Design Studio IX	2					23	23		23	11.5	10	90		
		18746	5	29	Sustainable Architecture	1					20	20		20	20	60	10	30	
		20284	5	29	Ethics and Architecture Practice	1					23	23		23	23	60	10	30	
		20635	5	29	Project Management	1					20	20		20	20	60	10	30	
	2013-2 SM	18704	1	38	Design Studio II	4	38	1				39		39	9.75	20	80		
		18701	1	38	Structure and Design	1	37		1			38		38	38	60	10	30	
		18715	1	38	CAD	2	38	1				39		39	19.5	20	80		
		18717	2	32	Design Studio IV	3		31	1		1	33		33	11	10	90		
		18723	2	32	Architecture Environment	1		32	1	3	2	38		38	38	60	10	30	
		20277	3	30	Presentation Technic	1		31	1		2	34		34	34	20	80		

Courses				Enrolled Students	Course	# of Class es	Total Enrollment								average number of students/c lass	class types			
Categories	Course #	YR	Under 5–Yr Program						All Other	total	lecture	studio	present ation	other					
			1YR				2YR	3YR								4YR	5YR	subtotal	
Req'd	2013–2 SM	18765	3	30	Design Studio VI	3			28	1		29		29	9.6	10	90		
		20276	3	30	Structure and Construction	1			18	1	1	20		20	20	60	10	30	
		10912	3	30	Site Planning	1		1	28	1		30		30	30	60	10	30	
		13989	3	30	Contemporary Architecture	1			28	3		31		31	31	60	10	30	
		20634	3	30	Practical English in Architecture	1			28	15	24	67		67	67	60	10	30	
		18736	4	26	Design Studio VIII	2				24	1	25		25	12.5	10	90		
		10155	4	26	Building Code	1				16	1	17		17	17	60	10	30	
		20282	4	26	Regional Architecture	1			2	23	1	26		26	26	60	10	30	
		20283	4	26	Building Systems	1			2	18		20		20	20	40	50	10	
		18745	5	26	Design Studio X	2					24	24		24	12	10	90		
Electiv es	2014–1	18738	3	29	Architectural Photography	1			11			11		11	11	60	10	30	
		18727	4	31	Environment and Human Behaviour	1				26	3	29		29	29	10	90		
		11019	4	31	Urban Design	1				29	1	30		30	30	60	10	30	
		18735	4	31	Asian Architecture	1		1		30	2	33		33	33	60	10	30	
	2013–2	18722	2	32	History of Western Architecture II	1		24	1			25		25	25	60	10	30	
		19792	4	26	Computer Graphics II	1			1	8		9		9	9	20	80		
		20286	5	26	Internship	1					22	22		22	22		100		

## VIII. Design Studios

[2013 2<sup>nd</sup> Semester Course Schedule]

50Min		Mon					Tues					Wed					Thurs					Fri					75min				
		1YR	2YR	3YR	4YR	5YR	1YR	2YR	3YR	4YR	5YR	1YR	2YR	3YR	4YR	5YR	1YR	2YR	3YR	4YR	5YR	1YR	2YR	3YR	4YR	5YR					
09:00 09:50	1	Struct. and Design				Internshi p  강인호 60407			Site Planning  Name 60504		Design Studio10  01 Name 60508  02 Name 60509					CAD(01)  Name 60501												A	09:00 10:15		
10:00 10:50	2	Name 60504												Struct. and Design	Presentat ion Technic  Name 60504		Regional Architect ure  Name 60529			Architect ure Environm ent  Name 60504	Contemp orary Architect ure  Name 60407										
11:00 11:50	3						Design Studio 2  01 Name 60402 02 Name 60403 03 Name 60404 04 Name 60405	Elective																							
12:00 12:50	4																											C	12:00 13:15		
13:00 13:50	5																										D			13:30 14:45	
14:00 14:50	6	Elective	Design Studio4  01 Name 60406	Design Studio6  01 Name 60409	Design Studio8  01 Name 60505							Elective			Design Studio10  01 Name 60508  02 Name 60509	Elective	Design Studio4  01 Name 60406	Design Studio6  01 Name 60409	Design Studio8  01 Name 60505  02 Name 60506		CAD(02)  Name 60501	West. Arch. History 2  Name 60529	Site Planning  Name 60504	Building Code  Name 60407		E		15:00 16:15			
15:00 15:50	7																													F	16:30 17:45
16:00 16:50	8													Building Systems Name 60504													G	18:00 19:15			
17:00 17:50	9																												H	19:30 20:45	
18:00 18:50	10																										I	21:00 22:15			
19:00 19:50	11																												I	21:00 22:15	
20:00 20:50	12																										I	21:00 22:15			
21:00 21:50	13																														

[2014 1<sup>st</sup> Semester Course Schedule]

50분		Mon					Tues					Wed					Thurs					Fri					75분							
		1YR	2YR	3YR	4YR	5YR	1YR	2YR	3YR	4YR	5YR	1YR	2YR	3YR	4YR	5YR	1YR	2YR	3YR	4YR	5YR	1YR	2YR	3YR	4YR	5YR								
09:00 09:50	1			한국 건축사  이윤정 60504					건축 프로그래 밍	도시 Design							건축의 이해	컴퓨터 그래픽1  01		아시아 건축론  이윤정 60407			건축 프로그래 밍	도시 Design		A	09:00 10:15							
10:00 10:50	2	정보화사 회와윤리							정재훈 60504	강인호 60407									김억중 90219					정재훈 60504	강인호 60407				B	10:30 11:45				
11:00 11:50	3																															C	12:00 13:15	
12:00 12:50	4																								D	13:30 14:45								
13:00 13:50	5																										E	15:00 16:15						
14:00 14:50	6	건축 Desi gn 스튜 디오 1	건축 Desi gn 스튜 디오 1	Design Studio3 01 정재훈 60406	Design Studio5 01 한필원 60408	Design Studio7 01 강인호 60505	자기 발 이 신현 60407																	건축 학 이 철현 0407	Design Studio9 01 김억중 60508	F			16:30 17:45					
15:00 15:50	7																																G	18:00 19:15
16:00 16:50	8							03 박창근	04 박인규	02 김진홍 60406A	02 신현준 60409	02 김학래 60506	실용 영어3																					
17:00 17:50	9			03 오쿠다 60406B	03 조재익 60410																			I	21:00 22:15									
18:00 18:50	10																																	
19:00 19:50	11																																	
20:00 20:50	12	자기발 Total 발 이 신현준 60407		구조 역학  황선경 60527																														
21:00 21:50	13																																	

#### A. 2013-2SM Design Studio

Categories	Design Studio								
	Number of Studio Space	Number of Classes	Number of Faculties	Student Work Space	Allowed Time per Student				
					Number of Students	Number of Faculties	Students/Faculties	Hour/Wk	Hour/Student
1YR	4	4	4	40	39	4	9.75	6	36.9 min
2YR	3	3	3	45	33	3	11	10	54.5 min
3YR	3	3	3	45	29	3	9.66	10	62.1 min
4YR	2	2	2	30	25	2	12.5	10	48.0 min
5YR	2	2	4	30	24	2	12	10	50.0 min
Total	14	14	16	190	150	16	54.91	46	50.3 min

#### B. 2014-1SM Design Studio

Categories	Design Studio								
	Number of Studio Space	Number of Classes	Number of Faculties	Student Work Space	Allowed Time per Student				
					Number of Students	Number of Faculties	Students/Faculties	Hour/Wk	Hour/Student
1YR	4	4	4	40	33	4	8.25	6	43.6 min
2YR	3	3	3	45	44	3	14.6	10	41.1 min
3YR	3	3	3	45	30	3	10	10	60.0 min
4YR	2	2	2	31	31	2	15.5	10	38.7 min
5YR	2	2	4	30	23	2	11.5	10	52.1 min
Total	14	14	16	191	161	16	59.85	46	46.1 min

## IX. Facility & Physical Resources

### 9.1 Allocated Space

#### 9.1.1 Facilities

##### A. Department Designated Space

Program is currently using 3,4,5th floors of science building at OOUUniversity for departmental usage. This space is specifically designated for this program. Floor plans are attached.

##### B. Space allocation in the department

Space allocation is as follows:

3rd – Faculty Office, Administration Office, Library, Exhibition Room, Research Space, Storage Space.

4<sup>th</sup> – 1,2,3rd year Design Studios

5<sup>th</sup> – 4,5th year Design Studios, Woodshop, Photo Studio, Print Room, A/V, Lecture Rooms, Carrier Services, Lecture Rooms.

##### 1) Maintenance

- Accreditation room and Storage is located near the administration office
- All materials collected from students are kept in the storage room
- Lecturers used breakout space near the accreditation room

##### 2) Faculty Areas

- There are 7 Faculty offices and they are near the administration office on the 3<sup>rd</sup> floor.
- Faculty Meeting room also serve to collect important information regarding accreditation.

##### 3) Design Studios

- Design Studios are located on the 4<sup>th</sup> and 5<sup>th</sup> floor into 14 different independent spaces.
- There are four 1<sup>st</sup> year studios, three 2<sup>nd</sup> yr studios, three 3<sup>rd</sup> year studios on the 4<sup>th</sup> floor and 2 4<sup>th</sup> year studios and 2 5<sup>th</sup> year studios on the 5<sup>th</sup> floor.
- All Studios have been designated a space and all students are give independent space to work.
- All spaces are heated/air conditioned and open 24/7.

##### 4) Student Lockers



- Students lockers are located in the studio space.

#### **5) Department Library**

- Department Library is located near the administration office is open to the students. Small seminar space is also offered within the library.
- There are two PCs in the library and can be used to search publications and to print.

#### **6) Critic and Exhibition Room**

- There are Critic and Exhibition Rooms that can be used for a critic by individual studios or for exhibitions.

#### **7) Lecture Room**

- Department lecture rooms are located through out the department on all floors from 3 to 5.
- Lecture rooms that are not specific to the department is shared with other engineering departments.

#### **8) Computer Lab and Print Room**

- There are 35 PCs on the 5<sup>th</sup> floor and they are connected to 2 plotters and 2 printers.
- A3 and A4 sized paper are provided all times for students to print their work.

#### **9) Woodlab**

- Woodlab is located on the 5<sup>th</sup> floor and provides all required machineries and 3d printers for the students.

#### **10) Photo Studio**

- Student work or all other course related activities requiring a dark room can be held at the Photo Studio on the 5<sup>th</sup> floor.

#### **11) Research Spaces**

- Research or Testing Spaces are provided for faculties and graduate students.

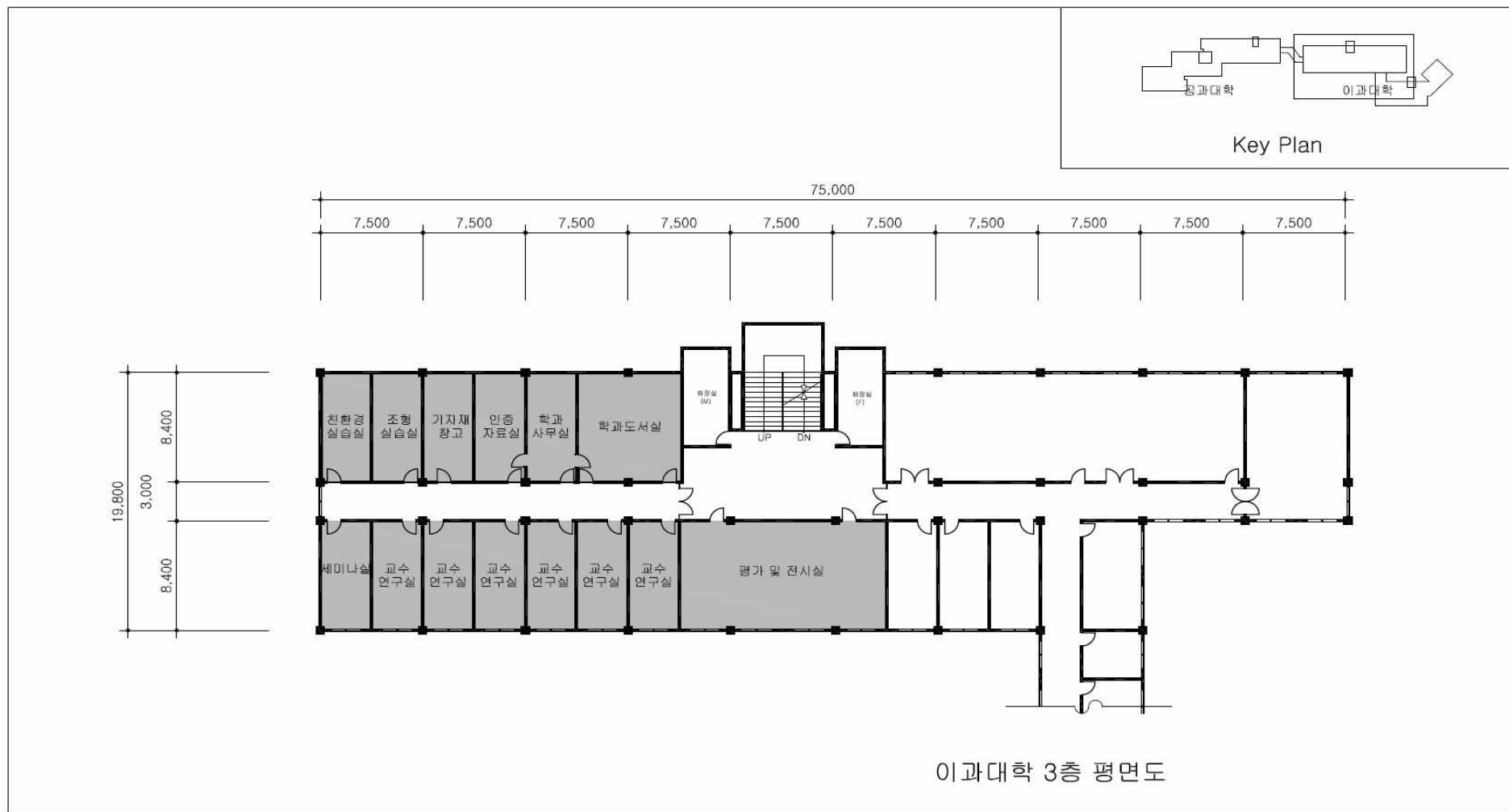
#### **12) Student Support Spaces**

- There are student activity spaces in the department library.
- Student Career Services are located on the 5<sup>th</sup> floor.
- Student breakout spaces are located on the 1<sup>st</sup> floor of the engineering building.

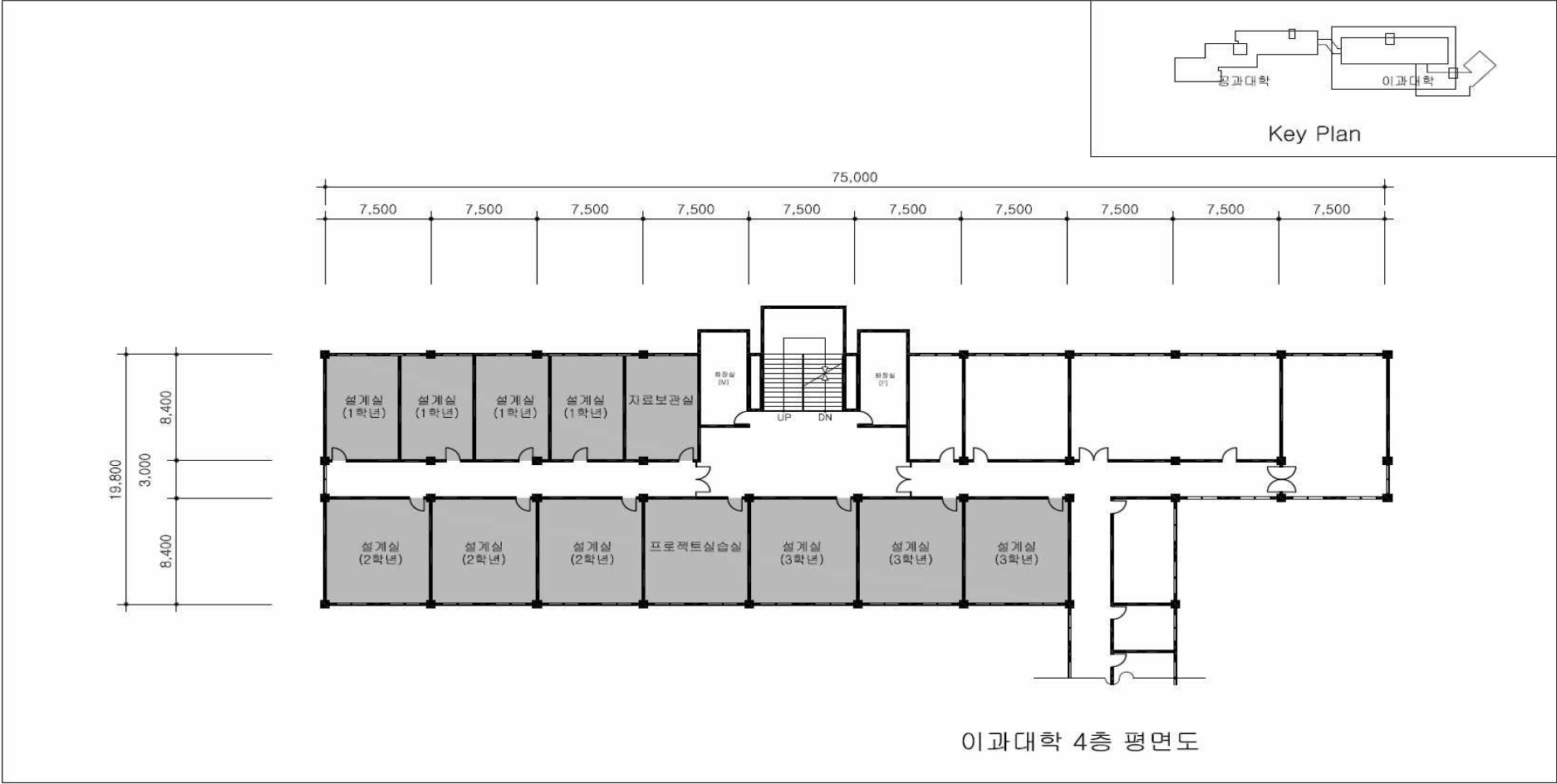
[Ref 9.1] Space Allocation for Architecture Department (2014. 3.)

Unit : m<sup>2</sup>

Room Name		Location	Area	Occupancy		Items	Open Hours	Management
Categories				Max. Occupancy	Current Occupancy			
Administrative	Admin. Office	Science Building 3fl	31.5	3	2	desk 3, chair 2, supplies	9 hours (9am-6pm)	admin
	Accreditation Room	Science Building 3fl	31.5	8	8	shelf 16, table 6, desk 1, chair 8	9 hours	accreditation PD
	Lecturer Room	Science Building 3fl		8	8	in the accreditation room		
	Storage	Science Building 3층	31.5	-	-	supplies		
	subtotal		94.5					
Faculty Support Space								
DesignStudio								
						Continue with appropriate information. Omitted for brevity		
	subtotal		674.5					
Support Space								
	subtotal		674.5					
total allocated area			1,795.5 m <sup>2</sup>					



Ref 9.1 3<sup>rd</sup> Floor Plan



Ref 9.2 4<sup>th</sup> Floor Plan



Ref 9.3 5<sup>th</sup> Floor Plan

## 9.2 Equipment and Software

### 9.2.1 Software

	Program	Format	# of copies	Notes
1	3D Max	CD	1	
2	AUTO CAD	CD	10	
Total			11	

### 9.2.2 Equipments

	List	Product Info	#	Notes
1	VTR camera	TRV-45	1	
2	Digital Camera	F90X-1	1	
3	Digital Camera	Canon PRO1	2	
4	Digital Camera	Nikon D70	6	
5			1	
6			1	
7		Continue with appropriate information. Omitted for brevity	3	
8			2	
9			2	
10			1	
11			1	
12			3	
Total			24	

### 9.2.3 Computer Related

	List	Product Info	#	Notes
1	CD WRITER		1	
2	Monitor	`21``(1280*1024)`	38	
3	Personal Computer	HP, Samsung, LG	33	
4	Notebook Computer	NT-P460-BA02/B	2	
5				
6				
7				
8				
9				
10		Continue with appropriate information. Omitted for brevity		
11				
12				
13				
14				
15				
16				
17				
18				
19				
20				
Total			74	

### 9.2.4 Others

	List	Product Info	#	Notes
1	Model Desk Saw	Dremel etc.	1	
2	Styrofoam Cutter	m/n : m100-033-090-80	1	
3	Foam Cutter	HCM-3S	14	
4				
5		Continue with appropriate information. Omitted for brevity		
6				
7				
8				
9				
Total			16	

## 9.2.5 Testing Equipment

	List	Product Info	#	Notes
1	BANG MACHINE	SOUND LEVEL RANGE:70-140dB(A)AT1KHz -SOUND EXPOSURE RANGE:	1	
2	Polishing Machine	MINOLTA 162-60	1	
3	Recording	TDS-601A	1	
4				
5				
6				
7		Continue with appropriate information. Omitted for brevity		
8				
9				
10				
11				
12				
13				
14				
15				
16				
17				
18				
Total			3	



## X. Publication and Periodical Resources (University Library)

Category	Field	Publication		Periodical		Total	
		Total Copies	Titles	Total Copies	Titles	Total Copies	Titles
000	All	43,628	20,778	9,791	1,471	53,419	22,249
100	Philosophy	33,411	16,572	1,474	123	34,885	16,695
200	Religion	39,497	19,787	1,728	144	41,225	19,931
300	Social Science	172,213	94,960	15,462	1,519	187,675	96,479
400	Language	36,001	17,885	2,166	191	38,167	18,076
500	Science	44,748	25,406	14,586	522	59,334	25,928
600	Applied Science	104,239	63,620	11,134	1,101	115,373	64,721
700	Arts	44,151	28,590	3,246	218	47,397	28,808
800	Literature	139,593	62,059	4,006	319	143,599	62,378
900	History	50,356	24,954	3,848	358	54,204	25,312
Total		707,837	374,611	67,441	5,966	775,278	380,577

- In addition to these resources, the university also provides more than 21 international and 10 domestic and 16 other types of online resources.

## XI. Major-Related Publication and Periodical Resources

### 11.1 Major-Related Resources

Category	#	Field	Publication		Periodical		Total	
			Total Copies	Titles	Total Copies	Titles	Total Copies	Titles
Main Library	690	Arch. Engineering	2,631	1,614	243	28	2,874	1,642
	710	Urban, Landspace	2,702	1,848	141	13	2,843	1,861
	720	Architecture	7,495	3,669	1,043	42	8,538	3,711
	Total		12,828	7,131	1,427	83	14,255	7,214
Department Library	690	Arch. Engineering	322	276	240	16	562	292
	710	Urban, Landspace	32	27	97	3	129	30
	720	Architecture	444	299	1721	22	2,165	321
	Total		798	602	2,058	41	2,856	643
Total			13,626	7,733	3,485	124	17,111	7,857

### 11.2 Major-Related Publications and Periodical Information

- Major books and materials are used for the Central Library, Parallel to this runs a department library.

- The Central Library DDC classified 690 710 720 Total 12 828 7131 kinds of books A book on the case of corresponding materials (architecture, urban, landscape), in the case of periodicals and 1,427 books holds a total of 83 species.

- A majority of information resources is a material that holds the main library, install a separate department within the library and teaching materials, etc. A frequency of use and the high data center operated by the University Library. Construction-related books are the Beach is a 2856 volume library to the current department. Total in the department is trying to expand the useful materials to the students.

- Major related books are to hold a total of 7857 kinds of more than 5000 kinds of materials as meet the total amount specified in certification criteria.

## XII. Supplemental Materials

### 1. Faculty Curriculum Vitae (CV of all Faculties and Lecturers in the Program)

Name	John Doe	Title	Professor		
Major	Architecture Design	Start Date	1995. 2. 21	Years of Employment	20+
담당Courses	Design Studio VII, VIII, Urban Design, Site Planning				
Education	Bachelor	College University	1978. 5.	Architecture Design	
	Master	College University	1985. 5.	Architecture Design	
	Ph.D	College University	1990. 5.	Architecture Design	
Experience	<div>- OO University, Professor (1995-Current)</div> <div>- List</div> <div>- List</div> <div>- List</div>				
Patent Owned	-				
Academic Papers & Proceedings (Past 5 Years)					

Memberships	
Awards & License	
Advisory Committee & Activities (Past 5 Years)	
Architectural Projects	

## 2. Course Description (For All Courses in the Program)

2014,1 <sup>st</sup> Semester	History of Western Architecture 1 (SPC-03, 04)	<i>No. 15 Course Description</i>
-------------------------------	--	----------------------------------

Course	History of Western Architecture 1	Course #	18720	Area	Cultural
		Class	Major/Required	Grade	2 <sup>nd</sup> Year
Schedule	Friday 10am- 12noon	Lecture RM	60407	Credit / Hour	3/3

Faculty	홍길동	Office	
Department		Office Hour	
E-mail		Tel.	

Prerequisite		Recommended	
--------------	--	-------------	--

Objective	
Description	
Grading	
Student Performance Criteria	
Textbook & Reading Materials	

## ■ Weekly Schedule

WK	M/D	Topic	Method	Assignment	SPC
1	3/7				
2	3/14				
3	3/21				
4	3/28				
5	4/4				
6	4/11				
7	4/18				

### 3. Accredited Course Check List for Students (For all students under this program)

Student ID No.		Name		Completed	10 Semester	Exp Graduation Date	2014.2								
Yr/Semester	Courses														
	Required							Optional							
	Design	Communic ation	Cultural Context	Technolog y	Practice	Electives	Total	Design	Communic ation	Cultural Context	Technolo gy	Practice	Electives	Total	
2009. 1 <sup>st</sup>	Design Studio1(3)			Structure and Design(3)		College Mathematics(3) Elective(2) Elective(2) Elective(2) Elective(0)	15						Technology Elective(3) Elective(3)	6	
2009. 2 <sup>nd</sup>	Design Studio2(3)					Elective2) Statistics(3) Elective(3) Elective(0)	11		CAD(3)	Understanding Architecture(3)			Elective(2)	8	
2010. 1 <sup>st</sup>	Design Studio3(5)	Computer Graphics1 (3)	History of Western Architecture1( 3)	Statics(3)		Elective(2) Elective(0)	16						Elective(3) Elective(3)	6	
2010. 2 <sup>nd</sup>	Design Studio4(5)	Presentation Technic(3)		Structure and Construction (3) Architecture Environment(3)		Elective(2) Elective(0)	16			History of Western Architecture2( 3)				3	
2011. 1 <sup>st</sup>	Design Studio5(5)		Architectural Programming (3) History of Korean Architecture(3)	Structure Systems(3)			14		Architectural Photography( 3)					3	
2011. 2 <sup>nd</sup>	Design Studio6(5)		Site Planning(3) Sustainable Architecture(3) Contemporary Architecture(3)				14						Elective(3)	3	
2012. 1 <sup>st</sup>	Design			Building			8			Urban				9	

	Studio7(5)			Systems(3)						Design(3) Asian Architecture(3) Environment and Human Behaviour(3)				
2012. 2 <sup>nd</sup>	Design Studio8(5)		Regional Architecture(3)	Building Systems(3)	Building Code(3)		14					Internship(3 )	Elective(3)	6
2013. 1 <sup>st</sup>	Design Studio9(5)		Sustainable Architecture(3)		Ethics and Architecture Practice(3) Project Management(3)		14						Elective(2) Elective(3)	5
2013. 2 <sup>nd</sup>	Design Studio10(5)	Practical English in Architecture(3)					8						Elective1(1)	1
Total	46	9	24	21	9	21	130	0	6	15	0	3	26	50



## 성 적 증 명 서

1 / 1 Pages

대 학 공과대학				학 부 건축학부				학과(전공) 건축학전공			
부 전 공				부 전 공2				제 2 전공			
학 번 2009				성 명 김준				성 별 남			
구분				구분				구분			
교 과 목 명				교 과 목 명				교 과 목 명			
2009 년도 1학기				2010 년도 2학기				취득학점 : 20 평점평균 : 3.37 환산점수 : 87.05 / 100			
1	건축설계스튜디오I	A+	3	2	건축설계스튜디오IV	B+	5	2013 년도 1학기			
1	구조와디자인	A+	3	2	건축환경	C-	3	2	건축경영과윤리	B+	3
1	대학수학	A-	3	2	프리젠테이션기법	B+	3	2	건축설계스튜디오IX	B+	5
1	실용영어I	A-	2	3	서양건축사II	B-	3	2	프로젝트관리	A-	3
1	작문과독서토론	B+	2	취득학점 : 19 평점평균 : 3.26 환산점수 : 85.60 / 100				2	환경친화건축	A-	3
1	정보처리개론	A+	2	2011 년도 1학기				6	디지털사진과컴퓨터그래픽	B-	2
1	채플	P	0	2	건축설계스튜디오V	B0	5	6	패션,스타일,라이프스타일	B-	3
6	기술과경제	B+	3	2	건축프로그램밍	C+	3	취득학점 : 19 평점평균 : 3.53 환산점수 : 89.24 / 100			
6	매스컴론	C+	3	2	구조시스템	B-	3	2013 년도 2학기			
취득학점 : 21 평점평균 : 3.86 환산점수 : 91.88 / 100				2	한국건축사	B0	3	2	건축설계스튜디오X	A-	5
2009 년도 2학기				3	건축사진학	C+	3	2	건축실무영어	C+	3
1	건축설계스튜디오II	A0	3	취득학점 : 17 평점평균 : 2.96 환산점수 : 82.68 / 100				6	봉사활동I	P	1
1	실용영어II	B+	2	2011 년도 2학기				취득학점 : 9 평점평균 : 3.44 환산점수 : 88.10 / 100			
1	채플	P	0	2	건축설계스튜디오VI	A-	5	총 취득학점 180			
1	통계학	A+	3	2	단지계획	B+	3	총 평 점 627.40			
1	현대인과정서	A0	3	2	지속가능건축	C-	3	총 평점평균 3.51 / 4.50			
3	CAD	A-	3	2	현대건축	A-	3	환 산 점 수 89.08 / 100			
3	건축의이해	A+	3	6	미학개론	C0	3				
6	미술의이해	A-	2	취득학점 : 17 평점평균 : 3.26 환산점수 : 85.60 / 100							
취득학점 : 19 평점평균 : 4.20 환산점수 : 95.00 / 100				2012 년도 1학기				==== < 이 하 여 백 > ====			
2010 년도 1학기				2	건축설계스튜디오VII	B+	5	한남사회 봉사 졸업인증			
1	실용영어III	B-	2	2	건축설비	B0	3				
1	채플	P	0	2	도시설계	A+	3				
2	건축설계스튜디오III	A-	5	3	아시아건축론	B0	3				
2	구조역학	C0	3	3	환경행태론	B0	3				
2	서양건축사I	B-	3	취득학점 : 17 평점평균 : 3.57 환산점수 : 89.56 / 100							
2	컴퓨터그래픽I	B+	3	2012 년도 2학기							
6	생활법률	A+	3	2	건물시스템	B0	3				
6	주거와문화	B+	3	2	건축법규	C-	3				
취득학점 : 22 평점평균 : 3.47 환산점수 : 88.55 / 100				2	건축설계스튜디오VIII	B+	5				
2010 년도 2학기				2	지역건축론	C+	3				
1	실용영어IV	B-	2	2	설계실습	A0	3				
1	채플	P	0	3	알고리즘	A+	3				
2	건축구조와시공	A0	3	6							

이수구분 : 1.교필 2.전필 3.전선 4.부전 5.교직 6.교선 7.부전공2 8.제2전공 9.제3전공 10.일반선택 \*영어강의 ...

철인(직인)이 없으면 무효임.

성적등급 : A+ 4.5(97~100); A0 4.3(94~96); A- 4.0(90~93); B+ 3.5(87~89); B0 3.3(84~86); B- 3.0(80~83); C+ 2.5(77~79); C0 2.3(74~76); C- 2.0(70~73); D+ 1.5(67~69); D0 1.3(64~66); D- 1.0(60~63); P(Pass)

#### 4. Departmental Rules & Regulations for Accreditation

(attach departmental rules & regulations)